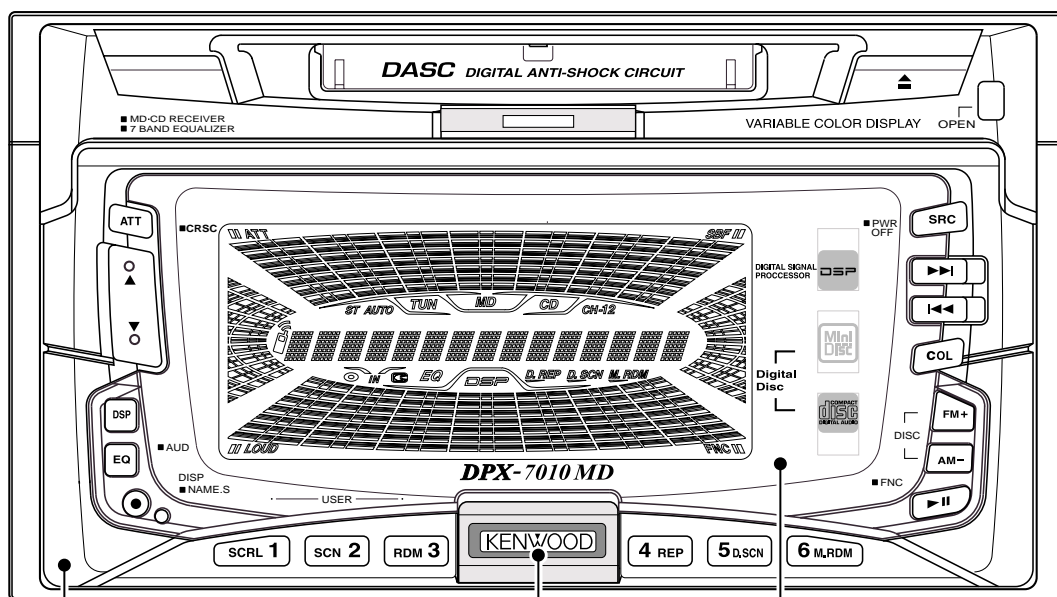


DPX-7010MD

SERVICE MANUAL

This service manual does not include information on the MD mechanism assembly (Exploded view, Parts list, Schematic diagram and Mechanism description).
For such information, refer to the MD mechanism assembly manual (X92-3770-00 : B51-7623-00).

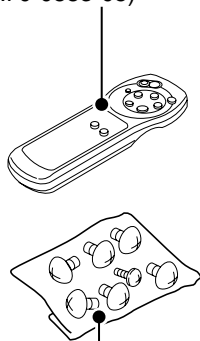


Panel assy
(A64-2106-02)

Badge
(B43-1269-04)

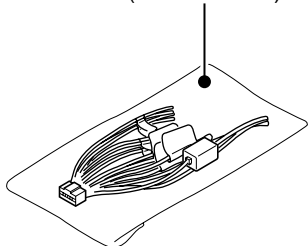
Front glass
(B10-3173-01)

Remote controller assy
(RC-500)
(A70-0883-05)

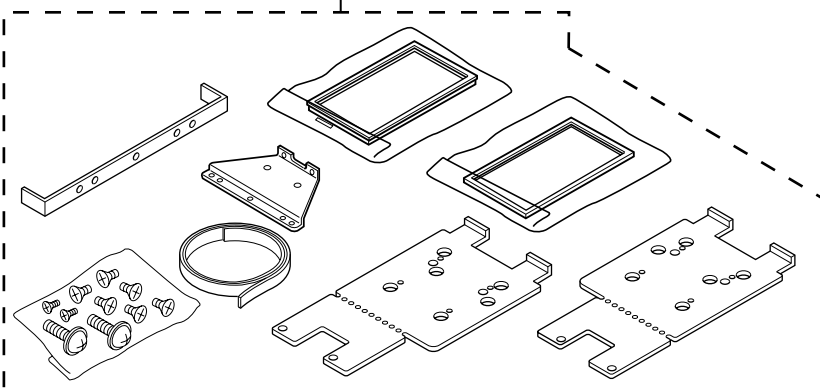


Screw set
(N99-1691-05)

DC cord
(E30-4886-05)



Mounting hardware
(J21-9578-05)



MICROCOMPUTER'S TERMINAL DESCRIPTION

System Microcomputer M30622MCAA58FP (X14 : IC1)

Pin	Pin Name	I/O	Description	Processing Operation
1	DSP_RVDT	O	DSP data output terminal	
2	DSP_CLK	O	DSP clock output terminal	
3	DSP_REDY	I	DSP write request terminal	
4	DSP_RST	O	DSP reset terminal	
5	DATAH	O	External channel data output terminal	
6	DATAC	I	External channel data input terminal	
7	CHCLK	I/O	External channel clock I/O terminal	
8	BYTE	I		Connected to GND
9	CNVss	I		
10	CHCON1	O	External CH1 selection terminal	H: CHCON1, L: Other
11	CHCON2	O	External CH2 selection terminal	H: CHCON2, L: Other
12	REST	I	Reset terminal	L: Reset
13	Xout	O	External crystal oscillation output terminal	
14	Vss	I		Connected to GND
15	Xin	I	External crystal oscillation input terminal	
16	Vcc	I	VDD 5V	
17	NMI	I		
18	SP_INT	I	Spectrum analyzer reception permission	
19	BU_DET	I	Back up detection terminal	H: Back up detection on, L: Normal
20	REQC	I	External channel reception request terminal	
21	PWIC_SVR	O	Power IC control terminal	H: On, L: Normal
22	PON	O	Power source control terminal	H: PON 5V output
23	PWIC_STBY	O	Power IC standby terminal	
24	AMP_CTRL	O	External amplifier control	
25	TEST	O	Power IC control terminal	
26	BUZZ	O	Beep output	
27	PCON	O	External amplifier power source control	H: On, L: Off
28	PANT	O	Power antenna control terminal	H: On, L: Off
29	SCL	O	IC2 clock output terminal	
30	SDA	I/O	IC2 data I/O terminal	
31	PN_MC_DATA	O	Data output terminal to panel microcomputer	
32	PN_SC_DATA	I	Data input terminal from panel microcomputer	
33	PN_RTS	O	Communication control between panel microcomputer	
34	PN_CTS	I	Communication control between panel microcomputer	
35	NC	O	Not used	
36	NC	I	Not used	
37	LAMP	O	Key illumination control terminal	When illumination on while ACC off: H
38,39	NC	O	Not used.	
40	ACC_DET	I	ACC detection terminal	H: ACC off
41	SP_REQ	O	Spectrum analyzer data output request to panel microcomputer	
42	NC	O	Not used.	
43	LED_MD	O	LED control terminal for MD	L: Disk in position, H: No disk
44,45	NC	O	Not used	

DPX-7010MD

MICROCOMPUTER'S TERMINAL DESCRIPTION

Pin	Pin Name	I/O	Description	Processing Operation
46	PN_SCCON	O	Communication control between panel microcomputer	
47	CD_MSTOP	O	CD mechanism microcomputer stop terminal	L: Mechanism stop
48	CD_LO/EJ	I/O	CD loading/eject control terminal	
49	CD_MOTOR	O	CD loading motor control terminal	
50	CD_SW3	I	CD mechanism SW3 detection terminal	L: Disk at switch position
51	NC	O	Not used.	
52	CD_AMUTE	I	CD MUTE request terminal	H: Mute on
53	CD_SW2	I	CD mechanism SW2 detection terminal	L: Disk at switch position
54	NC	O	Not used.	
55	TYPE0	I	Destination switch	H: J type, L: M type
56	SEL1	I	IC2 noise canceller switch	
57	SEL2	I	IC2 noise canceller switch	
58	MD_LOE_SW	I	MD play standby position detection switch	L: Disk at switch position
59	MD_LOAD	O	MD mechanism control motor terminal 0	
60	MD_EJECT	O	Disk eject control motor terminal 1	
61	MD_MSTOP	O	MD mechanism microcomputer stop request	L: Mechanism stop
62	Vcc	-		
63	NC	O	Not used.	
64	Vss	-		
65~70	NC	O	Not used.	
71	MRST	O	CD & MD mechanism microcomputer reset terminal	H: Normal, L: Reset
72	MD_AMUTE	I	Mute request terminal from MD mechanism control	H: Mute On
73	MD_LOS_SW	I	MD play standby position detection switch	
74	MD_DET_SW	I	MD eject complete switch (PACK DET)	
75	CD_SW1	I	CD mechanism SW1 detection terminal	L: Key interruption
76~79	NC	O	Not used	
80	FMSD	I	FM station detection terminal	
81	REAR/NF	O	Preout Rear/NF switching control terminal	L: Rear
82	FM+B	O	FM power source terminal	H: On
83	AM+B	O	AM power source terminal	H: On
84	MD/DC	O	MD/CD IC2 input control terminal	L: CD
85	NAVI_MUTE	I	Navi. mute	L: Navi. mute
86	PCON_IN	I	External amplifier over current control terminal	H: Protection operation
87	REQH	O	External channel transmission request terminal	
88	ILLUMI	I	Illumination detection terminal	H: Small lamp off
89	REFCON	O	A/D reference voltage output	H: Key interruption
90	PW_MUTE	O	Power IC mute control terminal	H: All off
91	MUTE	O	Mute terminal	H: Mute on
92~95	NC	O	Not used.	
96	Avss	I	Ground	
97	FSD_OUT	I	S-meter input terminal	H: 1.9V, FM station detected
98	Vref	I	A/D reference voltage output	
99	Avcc	I		
100	DSP_XLAT	O	DSP write request terminal	

MICROCOMPUTER'S TERMINAL DESCRIPTION

● Panel Microcomputer M30220MA-101GP (X25 : IC1)

Pin	Pin Name	I/O	Description	Processing Operation
1~8	NC	O	Not used	L: Fixed
9	PWM_CONT_R	O	Red LED brightness control	H: On
10	NC	O	Not used	L: Fixed
11	PWM_CONT_B	O	Blue LED brightness control	H: On
12	NC	O	Not used	L: Fixed
13	PWM_CONT_G	O	Green LED brightness control	H: On
14,15	NC	O	Not used	L: Fixed
16	CNvss	I	Processor mode select (external pull down)	
17	Xcin	O	Not used	L: Fixed
18	Xcout	O	Not used	L: Fixed
19	RESET	I	Reset input	L: Reset
20	Xout	O	Main system clock oscillation	f=10.0MHz
21	Vss	I	Ground	
22	Xin	I	Main system clock oscillation	f=10.0MHz
23	Vcc	I	Positive power supply terminal	
24	NMI	I	Not used (external pull down)	
25	SP_INT	O	Spectrum analyzer data transfer flag	
26	SP_SRQ	I	Spectrum analyzer data transfer flag	
27	LCD_INH	O	LCD character light on inhibit	L: Off
28	LCD_CS	O	External LCD driver select	H: Select
29	LCD_CLK	O	External LCD driver clock output	
30	NC	I	Not used (external pull down)	L: Fixed
31	LCD_DO	O	External LCD driver data output	
32	NC	O	Not used	L: Fixed
33	SP_DATA	I	Spectrum analyzer data input	
34	SP_CLK	I	Spectrum analyzer clock input	
35	NC	O	Not used	L: Fixed
36	PN_SC_DATA	O	System microcomputer communication. Data output	
37	PN_MC_DATA	I	System microcomputer communication. Data input	
38	PN_RTS	O	RTS output. (Connect PN_CTS of system microcomputer)	
39	PN_CTS	I	CTS input. (Connect PN_RTS of system microcomputer)	
40	NC	O	Not used	L: Fixed
41	PN_SC_CON	I	System microcomputer communication. Panel microcomputer operation control	L: Normal operation
42~46	NC	O	Not used	L: Fixed
47	REMOCON	I	Remote controller signal input	
48~52	NC	O	Not used	L: Fixed
53~58	KR5~KR0	I	Key return signal input 5~0	
59~73	NC	O	Not used	L: Fixed
74~77	KS3~KS0	O	Key scan output 3~0	
78~90	SEG47~SEG35	O		
91	Vcc	I	Positive power supply terminal	

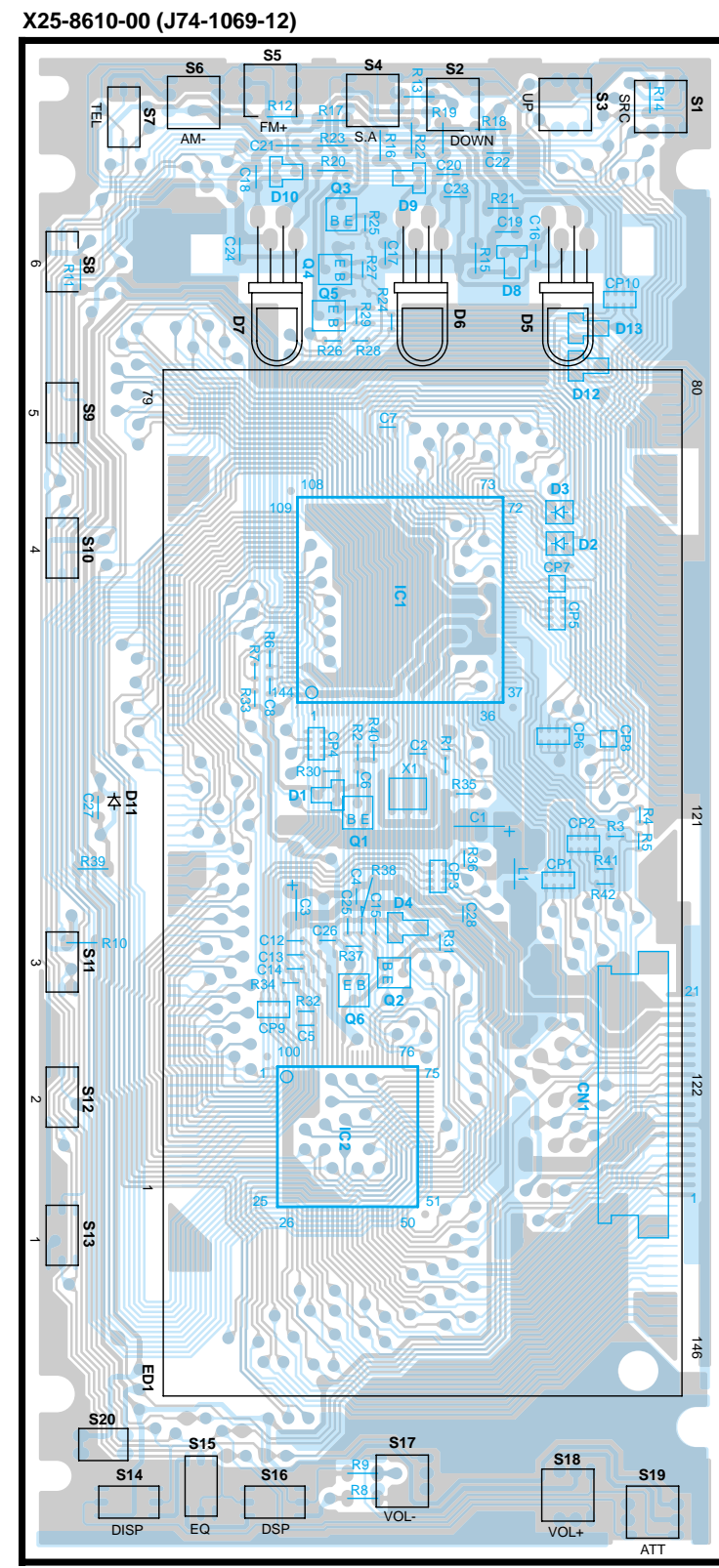
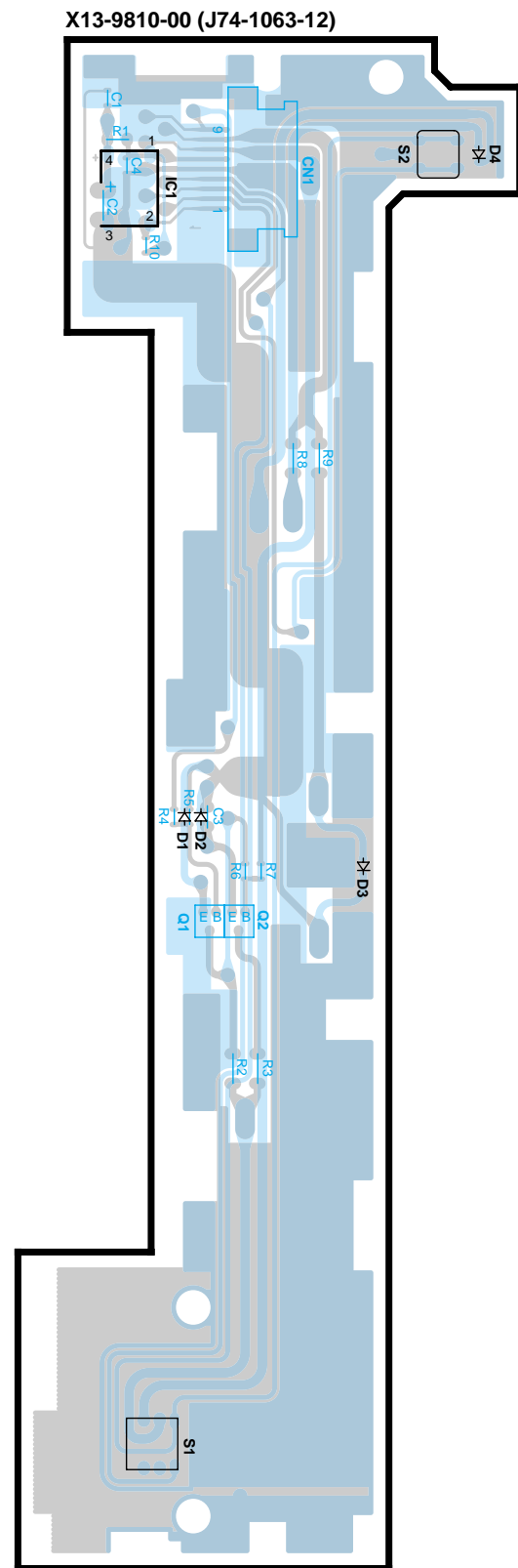
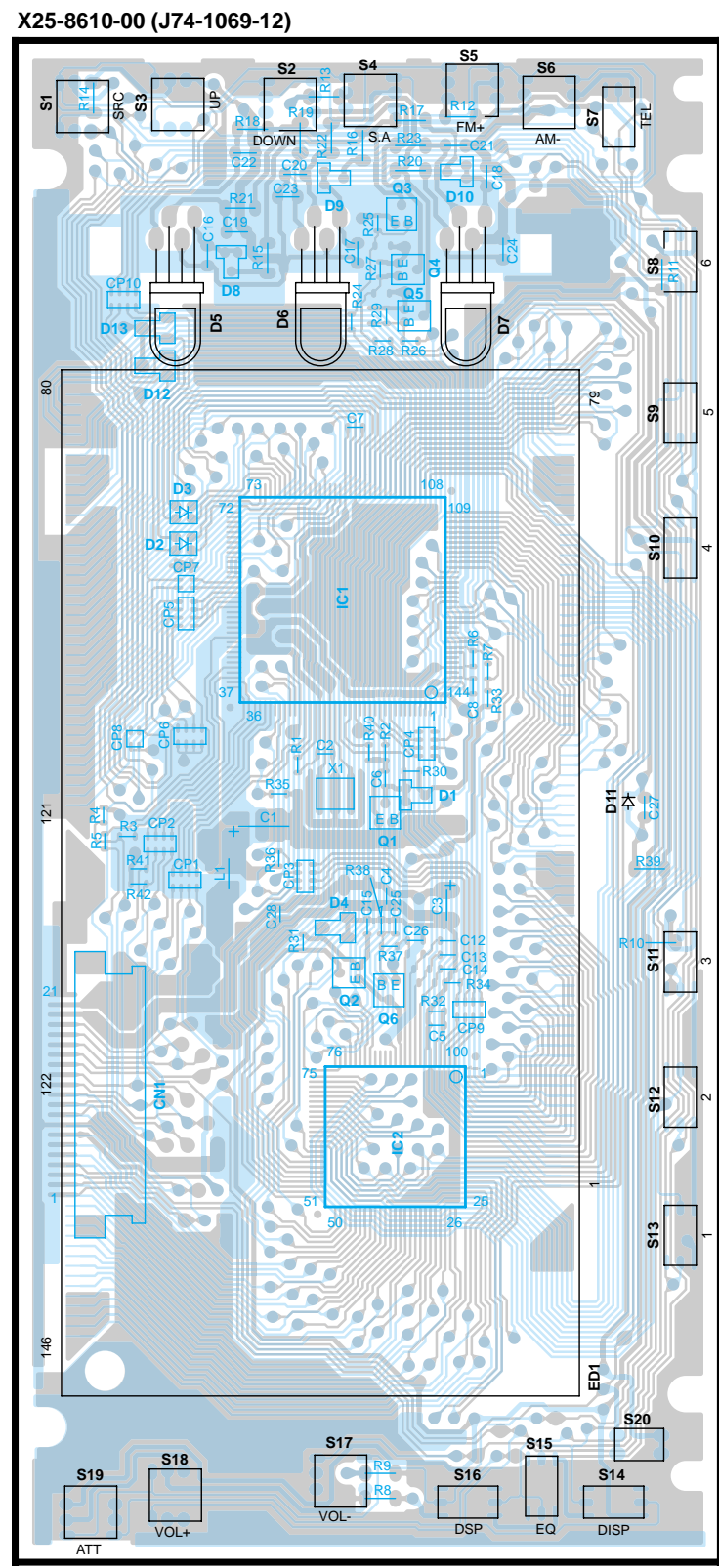
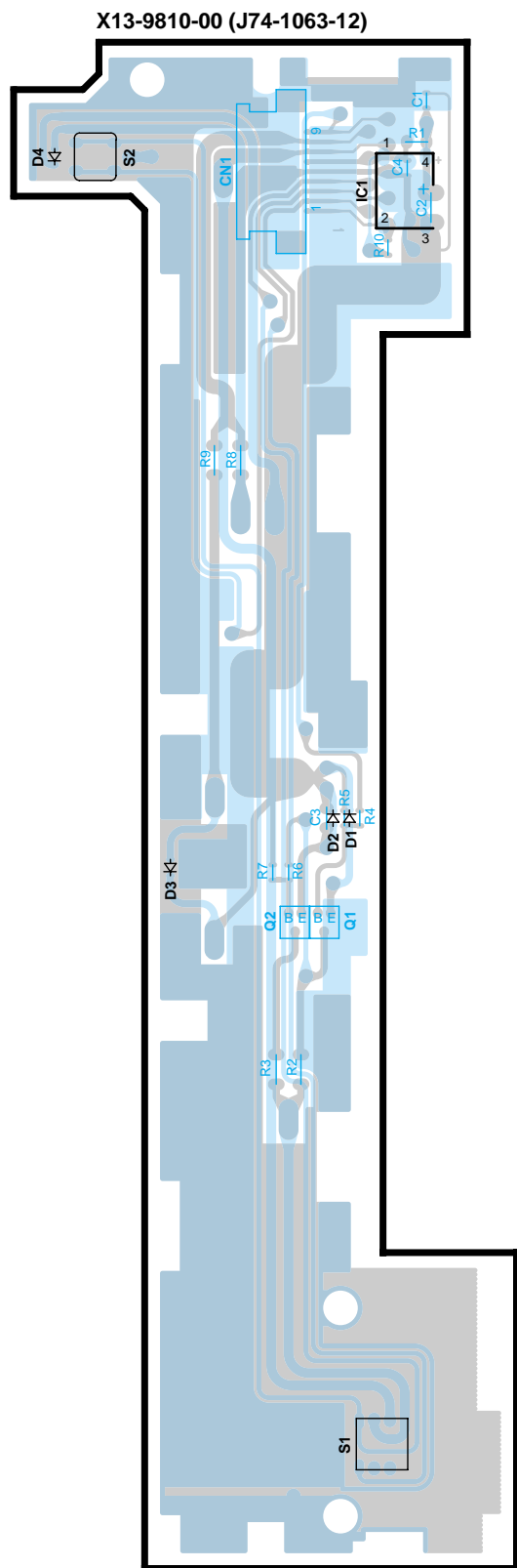
DPX-7010MD

MICROCOMPUTER'S TERMINAL DESCRIPTION

Pin	Pin Name	I/O	Description	Processing Operation
92	SEG34	O		
93	Vss	I	Ground	
94~127	SEG33~SEG0	O		
128~131	COM3~COM0	O		
132	C2	I		
133	C1	I		
134	VL3	I	LCD drive reference voltage	
135	VL2	I	LCD drive reference voltage (2/3 x VL3)	
136	VL1	I	LCD drive reference voltage (1/3 x VL3)	
137	Vss	I	Ground	
138,139	NC	O	Not used	L: Fixed
140	Avss	I	Analog ground	
141	NC	O	Not used	L: Fixed
142	Vref	I	Reference voltage input	
143	Avcc	I	Analog positive power supply	
144	NC	I	Not used	L: Fixed

PC BOARD (COMPONENT SIDE VIEW)

(FOIL SIDE VIEW)



X13-9810-00

IC	Q	Address
1		2B
	1	4B
	2	4B

X25-8610-00

IC	Q	Address	IC	Q	Address
1		3D	3		2D
2		5D	4		2D
	1	4D	5		2D
	2	5D	6		5D

X13-9810-00

IC	Q	Address
1		2F
	1	4F
	2	4F

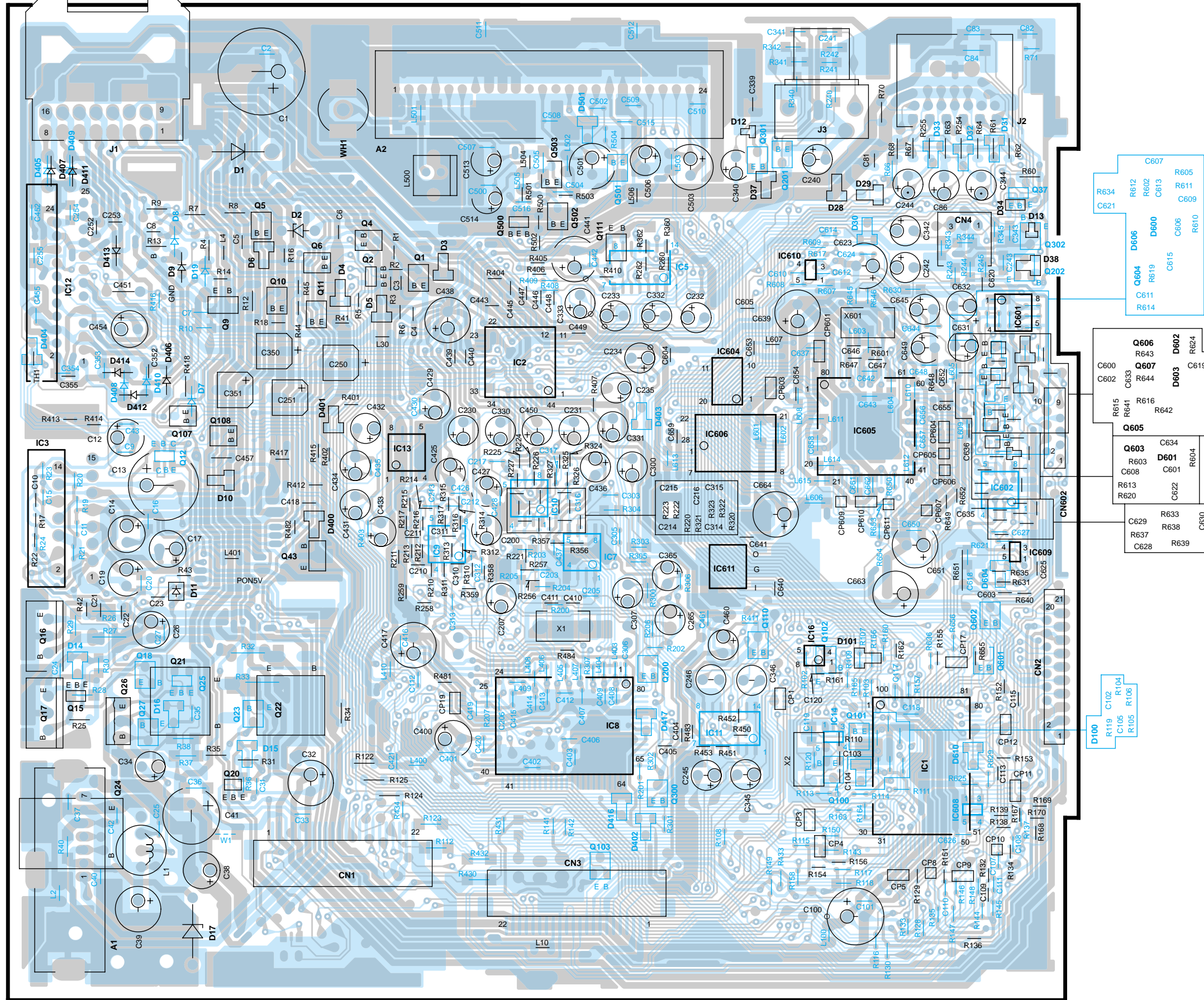
X25-8610-00

IC	Q	Address	IC	Q	Address
1		3I	3		2I
2		5I	4		2I
	1	4I	5		2I
	2	5I	6		5I

Refer to the schematic diagram for the values of resistors and capacitors.

PC BOARD (COMPONENT SIDE VIEW)

X14-6320-21 (J74-1065-32)



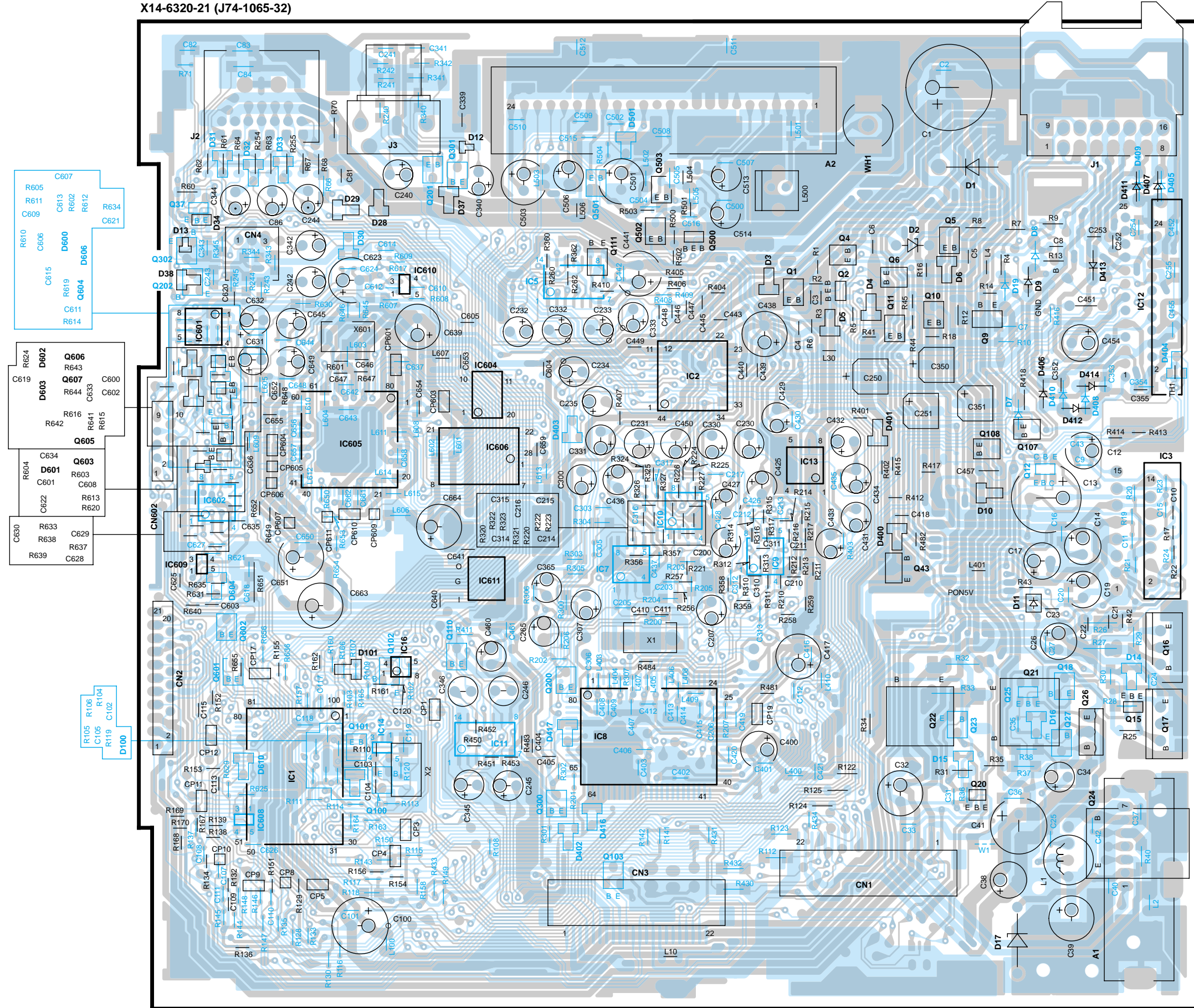
X14-6320-21

IC	Q	Address	IC	Q	Address
1		6Q	21	5L	
2		3N	22	5M	
3		4L	23	5M	
5		3O	24	6L	
7		4O	25	5L	
8		5O	27	5L	
9		4N	37	2Q	
10		4N	43	4M	
11		6P	100	6P	
12		3L	101	6P	
13		4N	102	5P	
14		6P	103	6O	
16		5P	107	4L	
	1	3N	108	4M	
	2	3M	110	5P	
	4	3M	111	3O	
	5	3M	200	5O	
	6	3M	201	2P	
	9	3M	202	3Q	
	10	3M	300	6O	
	11	3M	301	2P	
	12	4L	302	3Q	
	15	5L	500	3N	
	16	5K	501	2O	
	17	5K	502	2O	
	18	5L	503	2O	
	20	6M			

Refer to the schematic diagram for the values of resistors and capacitors.

PC BOARD (FOIL SIDE VIEW)

X14-6320-21 (J74-1065-32)

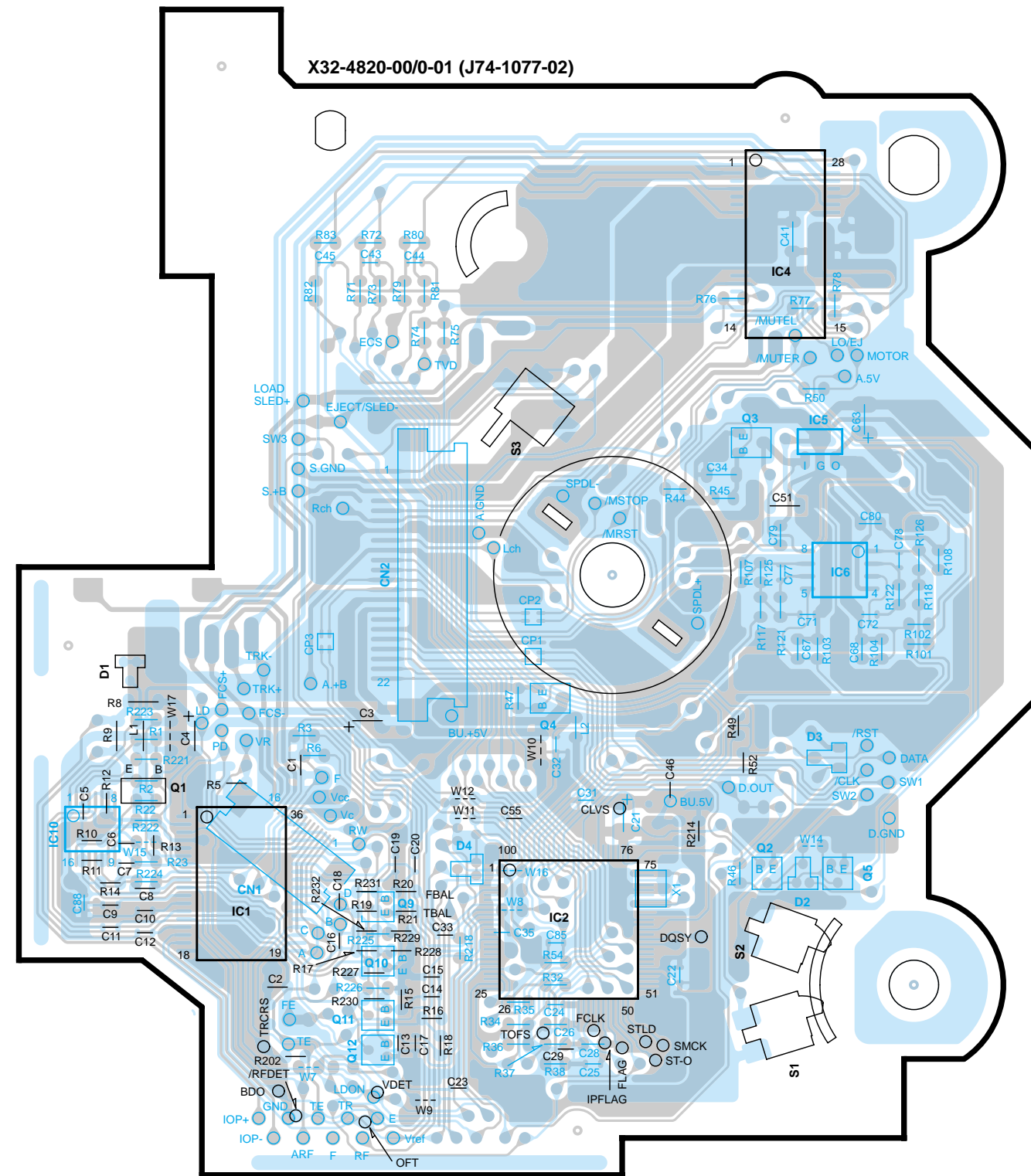


X14-6320-21

IC	Q	Address	IC	Q	Address
1		6W	21	5AA	
2		3Y	22	5AA	
3		4AB	23	5AA	
5		3Y	24	6AB	
7		4Y	25	5AA	
8		5Y	27	6AB	
9		4Z	37	2V	
10		4Y	43	4AA	
11		6X	100	6X	
12		3AB	101	6W	
13		4Z	102	5X	
14		6X	103	6Y	
16		5X	107	4AA	
	1	3Z	108	4AA	
	2	3Z	110	5X	
	4	3Z	111	3Y	
	5	3AA	200	5Y	
	6	3AA	201	2X	
	9	3AA	202	3V	
	10	3AA	300	6Y	
	11	3AA	301	2X	
	12	4AB	302	3V	
	15	5AB	500	3Y	
	16	5AB	501	2Y	
	17	5AB	502	2Y	
	18	5AB	503	2Y	
	20	6AA			

Refer to the schematic diagram for the values of resistors and capacitors.

PC BOARD (COMPONENT SIDE VIEW)

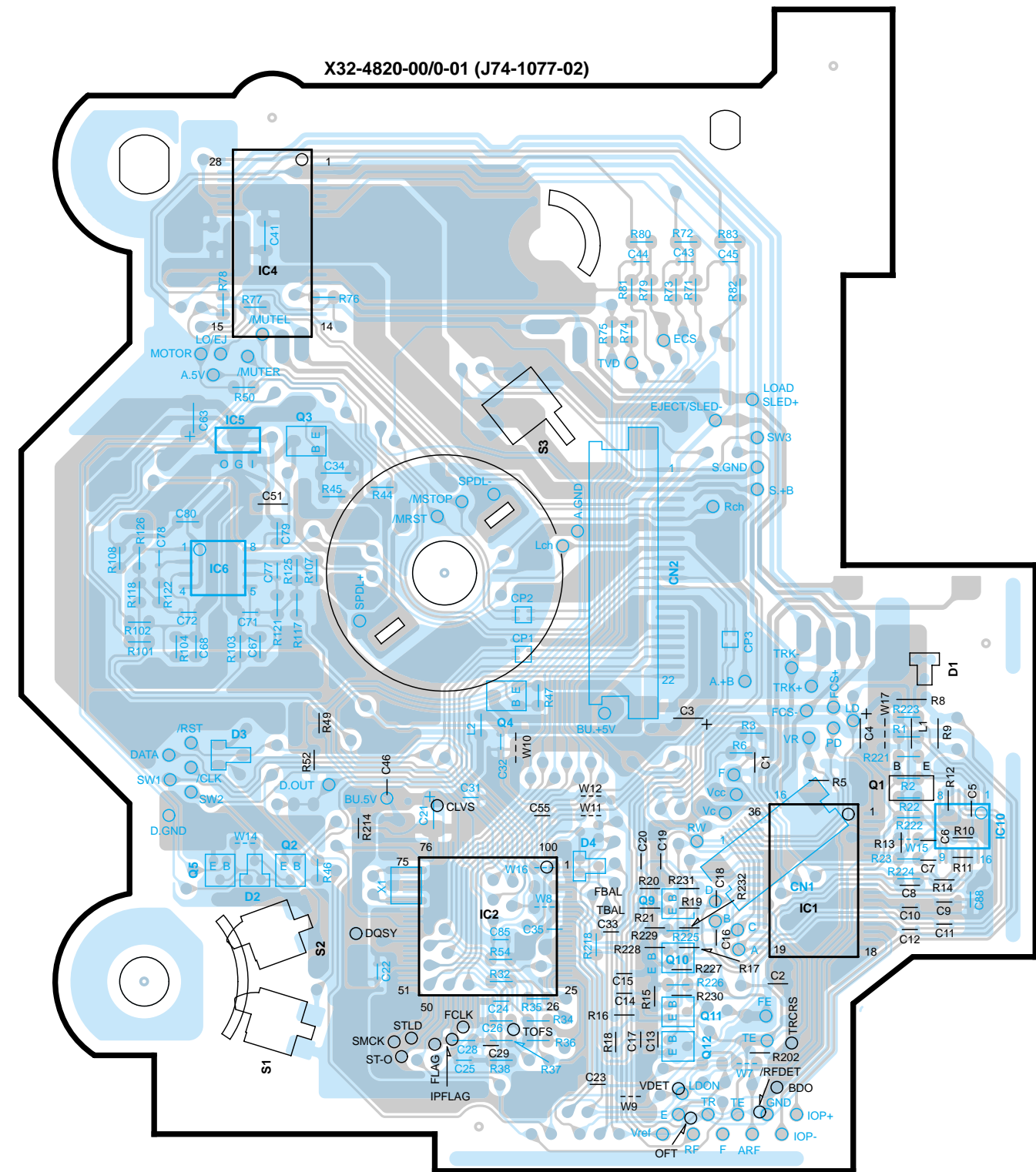


Refer to the schematic diagram for the values of resistors and capacitors.

X32-4820-01

IC	Q	Address	IC	Q	Address	IC	Q	Address
1		5AF	10		5AE	5		5AI
2		5AG	1		5AE	9		5AF
4		2AH	2		5AH	10		5AF
5		3AH	3		3AH	11		6AF
6		4AH	4		4AG	12		6AF

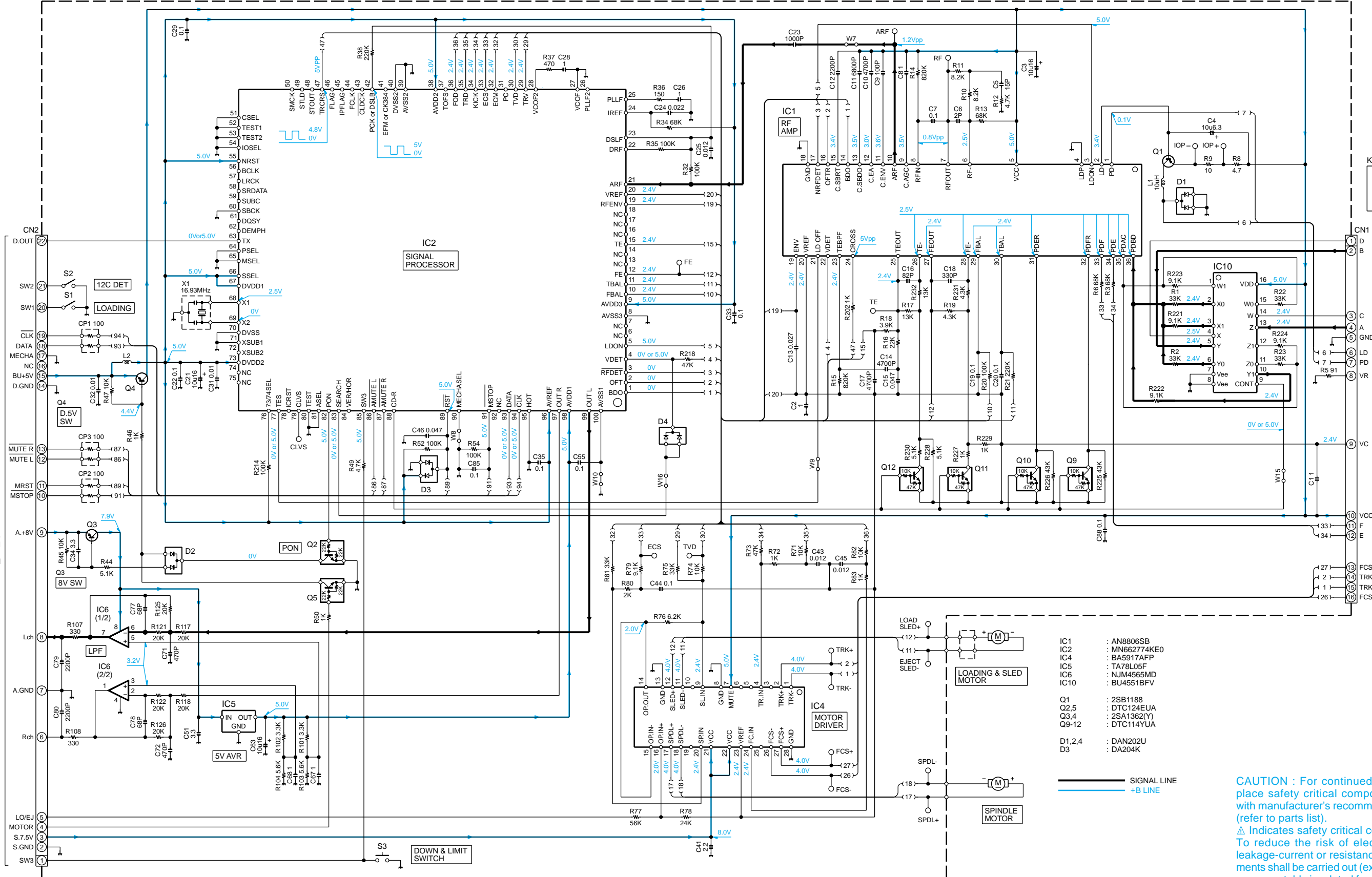
(FOIL SIDE)



X32-4820-01

IC	Q	Address	IC	Q	Address	IC	Q	Address
1		5AM	10		6AN	5		5AK
2		5AL	1		6AN	9		5AM
4		2AK	2		5AK	10		5AM
5		3AK	3		3AK	11		6AM
6		4AK	4		4AL	12		6AM

1
2
3
4
5
6
7



- IC1 : AN8806SB
- IC2 : MN662774KE0
- IC4 : BA5917AFP
- IC5 : TA78L05F
- IC6 : NJM4565MD
- IC10 : BU4551BFV
- Q1 : 2SB1188
- Q2,5 : DTC124EUA
- Q3,4 : 2SA1362(Y)
- Q9-12 : DTC114YUA
- D1,2,4 : DAN202U
- D3 : DA204K

— SIGNAL LINE
 — +B LINE

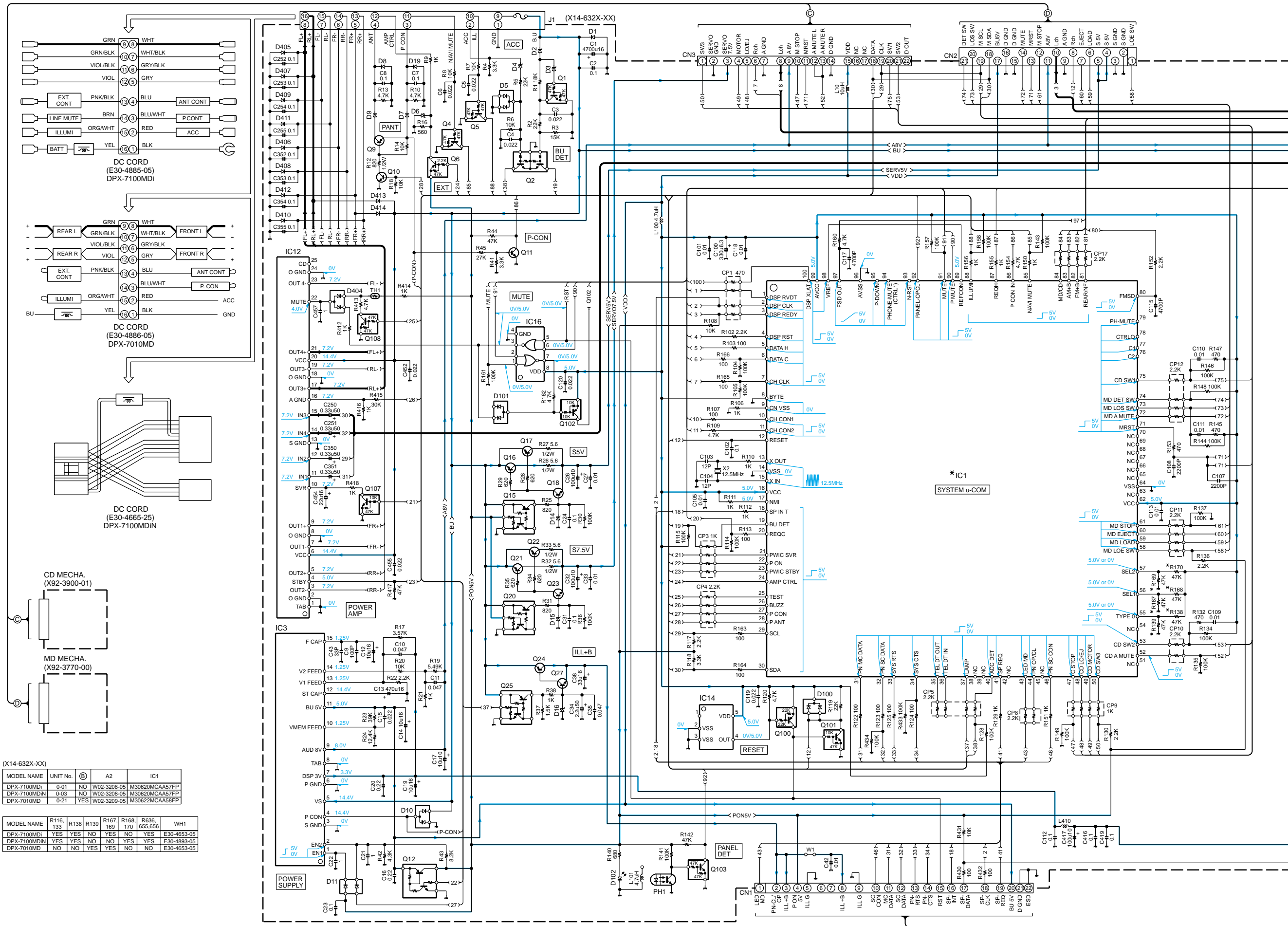
CAUTION : For continued safety, replace safety critical components only with manufacturer's recommended parts (refer to parts list).
 ⚠ Indicates safety critical components. To reduce the risk of electric shock, leakage-current or resistance measurements shall be carried out (exposed parts are acceptably insulated from the supply circuit) before the appliance is returned to the customer.

2SB1565	DTA114EK DTA123JK DRA124EK DTC114YK DTC114YUA DTC143TK DTC144EK	2SA1362 2SC2412K 2SD2114K	2SB1188 2SD1766	FMW1	IMD16A	2SC4081	DTC124EUA	NJM4565MD	DAN202K DAN202U	TA78L05F
---------	---	---------------------------------	--------------------	------	--------	---------	-----------	-----------	--------------------	----------

• DC voltages are as measured with a high impedance voltmeter. Values may vary slightly due to variations between individual instruments or/and units.

- IC1 : *
- IC2 : TDA7400
- IC3 : L4943
- IC5,11 : BA3129F
- IC7,9,10,13 : NUM4565MD
- IC8 : CXD2728Q-1
- IC12 : TA8263AH
- IC14 : PST9142NR
- IC16 : TC7W02FU
- D1 : RM10ZLF
- D2 : HZS7A3L
- D3 : 02C212-X
- D4 : 02C26.8-Y
- D5,30,100,403 : DAN202K
- D6,401 : 02C26.2-X
- D7-9,19,405,407-411, 413,414 : 1SR154-400
- D10 : DAN217
- D11 : DA227
- D12,13 : DA221
- D14 : 02C25.6-Y
- D15 : 02C27.5-X
- D16 : HZM11N(B1)
- D28,29 : HZM6.8WA
- D31-33 : DA204K
- D34 : FTZ6.8E
- D37,38,101,402,404 : DAP202K
- D102 : AN1102W-TR(BC)
- D400 : 02C23.6-Z
- D406,412 : U1GWJ44
- D501 : HZM5.6N(B2)
- Q1,4,5,103,108,110,111 : 2SC2412K
- Q2 : DTC144EK
- Q6 : FMV1
- Q9 : DTA123JK
- Q9 : 2SB1188(R)
- Q10 : 2SC2412K(S)
- Q11,18,23,27,501 : 2SC2412K
- Q12 : IMD16A
- Q15,20,25,37 : FMC2A
- Q16,17 : 2SB1565
- Q21,22 : 2SA1906
- Q24 : 2SB1565F
- Q43 : 2SD1766
- Q100 : DTA124EK
- Q101,107 : DTC114YK
- Q102 : DTA114EK
- Q200,300 : 2SD2114K
- Q201,202,301,302 : 2SD2114K
- Q500 : DTC143TK
- Q502,503 : FGM1A
- Q503 : CPH3105

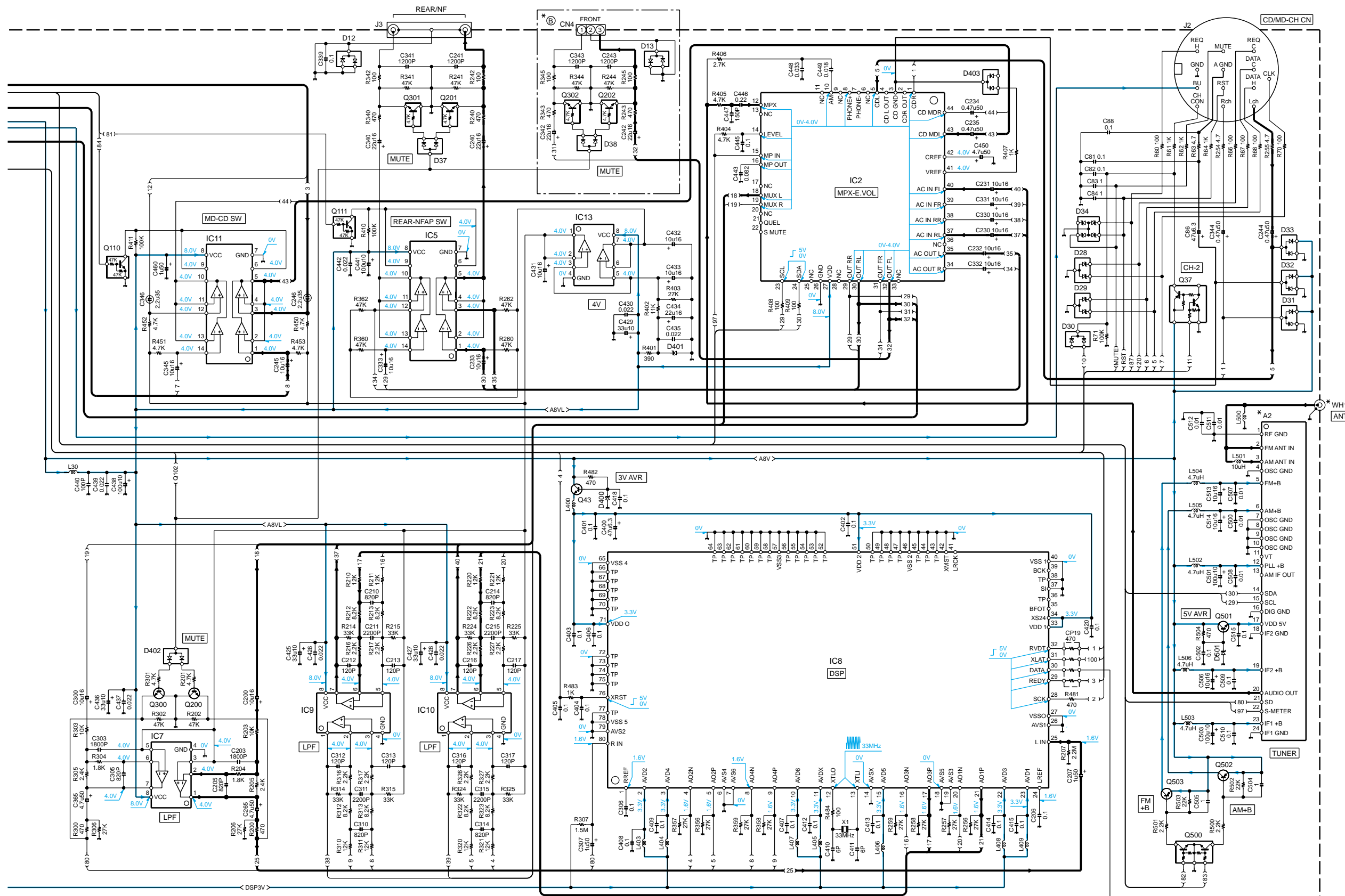
— SIGNAL LINE
 — GND LINE
 — +B LINE



(X14-632X-XX)

MODEL NAME	UNIT No.	Ⓢ	A2	IC1
DPX-7100MDI	0-01	NO	W02-3208-05	M30620MCAA57FP
DPX-7100MDN	0-03	NO	W02-3208-05	M30620MCAA57FP
DPX-7010MD	0-21	YES	W02-3209-05	M30622MCAA58FP

MODEL NAME	R116, 133	R138	R139	R167, 169	R170	R168, 655, 656	R636	WH1
DPX-7100MDI	YES	YES	NO	YES	NO	NO	NO	E30-4653-05
DPX-7100MDN	YES	YES	NO	NO	YES	YES	YES	E30-4893-05
DPX-7010MD	NO	NO	YES	YES	NO	NO	NO	E30-4653-05



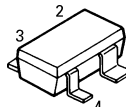
DAP202K
DA204K
DA221



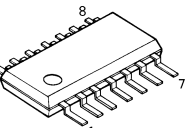
02CZ12-X
02CZ3.6-Z
02CZ6.2-X
02CZ7.5-X
02CZ8.2-Z



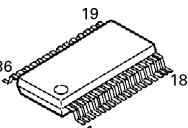
DA227



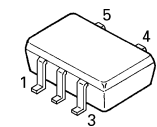
BA3129F



AN8806SB



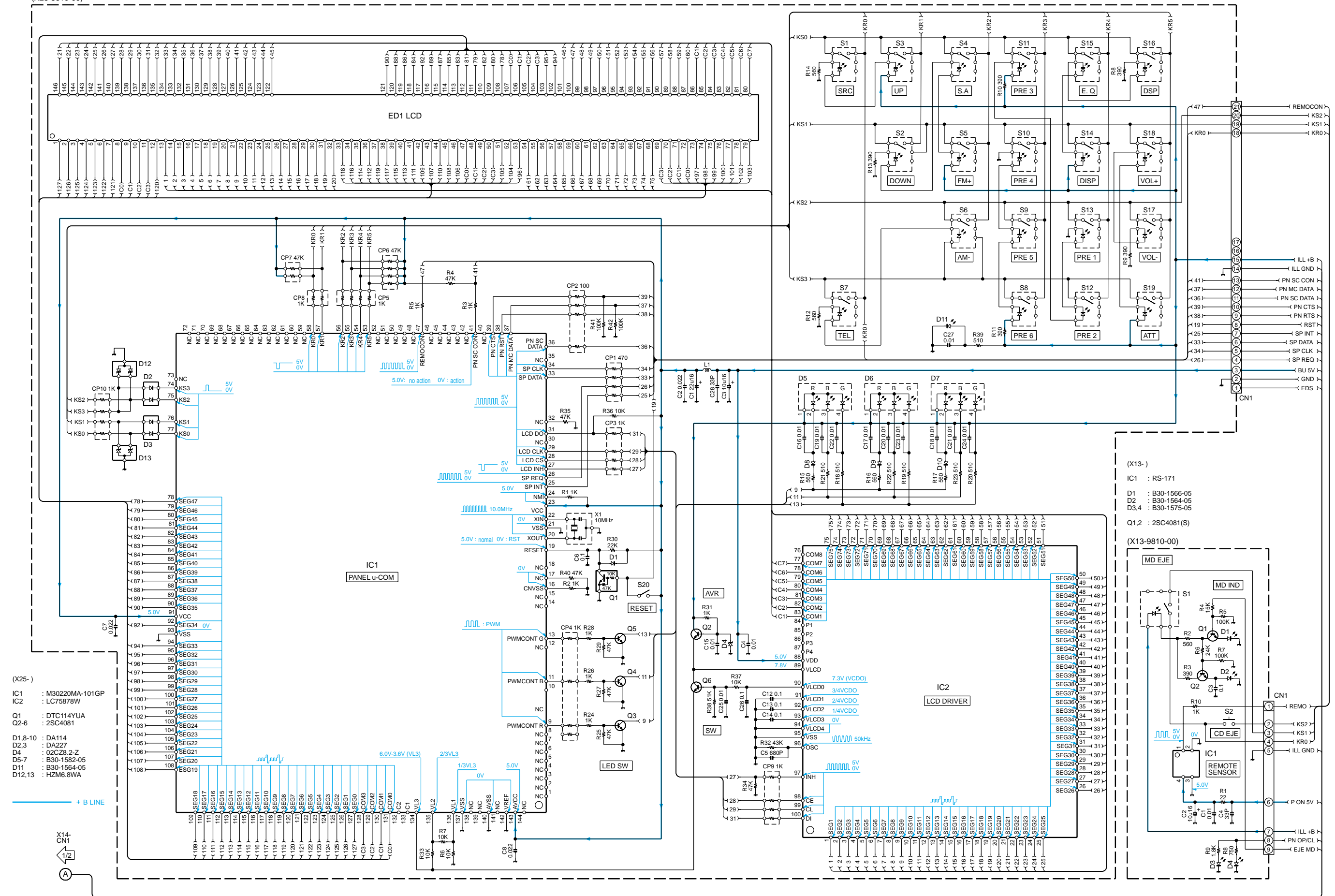
PST9152NR



CAUTION : For continued safety, replace safety critical components only with manufacturer's recommended parts (refer to parts list).
 ▲ Indicates safety critical components. To reduce the risk of electric shock, leakage-current or resistance measurements shall be carried out (exposed parts are acceptably insulated from the supply circuit) before the appliance is returned to the customer.

- DC voltages are as measured with a high impedance voltmeter. Values may vary slightly due to variations between individual instruments or/and units.

(X25-8610-00)



- (X25-)
 IC1 : M30220MA-101GP
 IC2 : LC75878W
 Q1 : DTC114YUA
 Q2-6 : 2SC4081
 D1,8-10 : DA114
 D2,3 : DA227
 D4 : 02CZ8.2-Z
 D5-7 : B30-1582-05
 D11 : B30-1564-05
 D12,13 : HZM6.8WA

- (X13-)
 IC1 : RS-171
 D1 : B30-1566-05
 D2 : B30-1564-05
 D3,4 : B30-1575-05
 Q1,2 : 2SC4081(S)

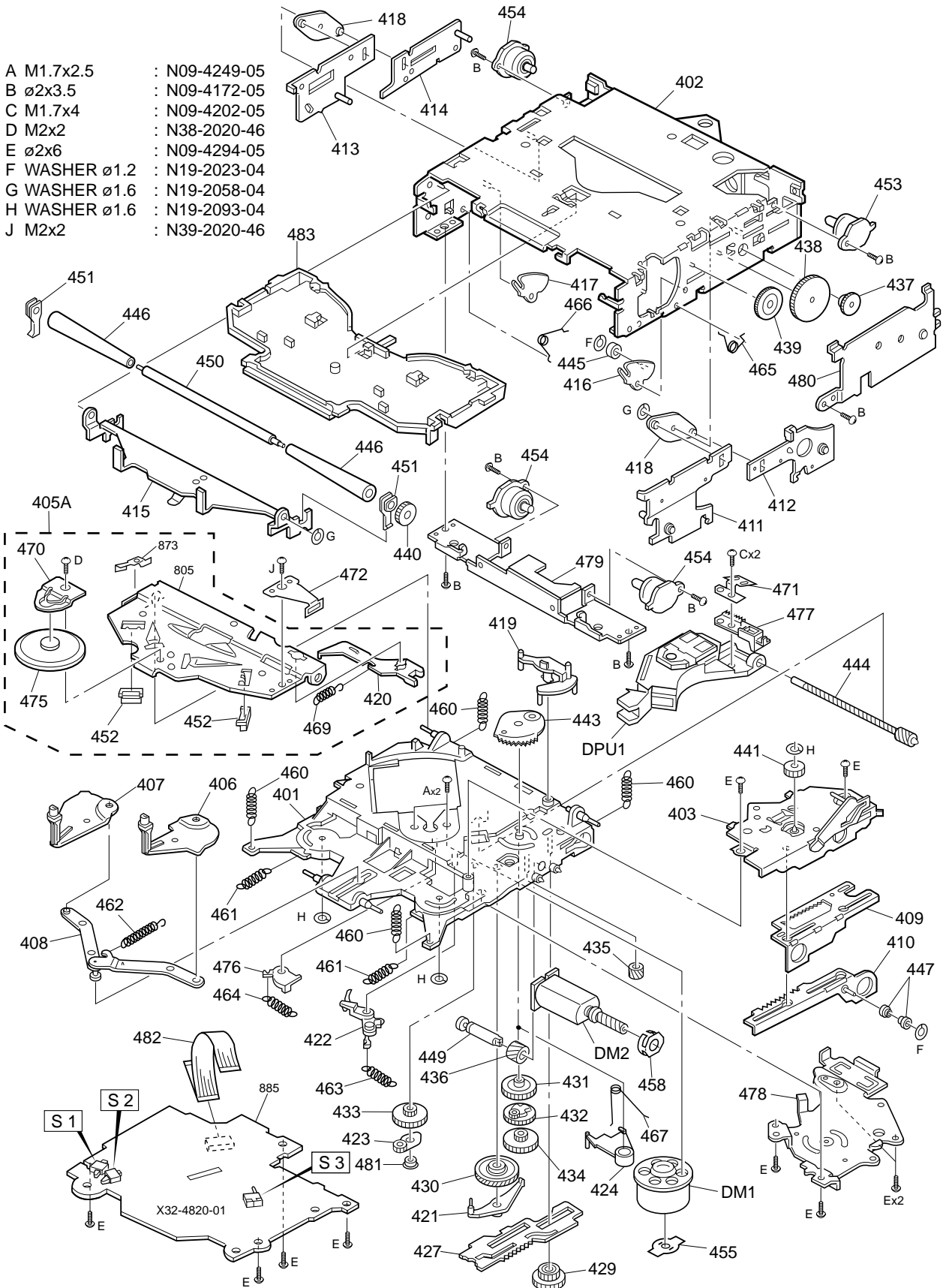
(X13-9810-00)

CAUTION : For continued safety, replace safety critical components only with manufacturer's recommended parts (refer to parts list).
 ⚠ Indicates safety critical components. To reduce the risk of electric shock, leakage-current or resistance measurements shall be carried out (exposed parts are acceptably insulated from the supply circuit) before the appliance is returned to the customer.

• DC voltages are as measured with a high impedance voltmeter. Values may vary slightly due to variations between individual instruments or/and units.

EXPLODED VIEW (MECHANISM)

- | | | | |
|---|-------------|---|-------------|
| A | M1.7x2.5 | : | N09-4249-05 |
| B | ø2x3.5 | : | N09-4172-05 |
| C | M1.7x4 | : | N09-4202-05 |
| D | M2x2 | : | N38-2020-46 |
| E | ø2x6 | : | N09-4294-05 |
| F | WASHER ø1.2 | : | N19-2023-04 |
| G | WASHER ø1.6 | : | N19-2058-04 |
| H | WASHER ø1.6 | : | N19-2093-04 |
| J | M2x2 | : | N39-2020-46 |



PARTS LIST

* New parts

Parts without Parts No. are not supplied.

Les articles non mentionnes dans le Parts No. ne sont pas fournis.

Teile ohne Parts No. werden nicht geliefert.

Ref. No.	A d d	N e w	Parts No.	Description	Desti- nation
DPX-7010MD					
201	2C	*	A21-4028-03	DRESSING PANEL	
202	2C	*	A46-1665-01	REAR COVER	
203	1D	*	A52-0766-02	TOP PLATE	
204	1C	*	A53-1682-03	LID	
PA1	2C	*	A64-2106-02	PANEL ASSY	
PA2	1C	*	A22-2850-02	SUB PANEL ASSY	
RM1	1C	*	A70-0883-05	REMOTE CONTROLLER ASSY (RC-500)	
206	1C	*	B03-3066-03	DRESSING PLATE	
207	1C	*	B10-3174-03	FRONT GLASS	
208	1C	*	B10-3195-04	FRONT GLASS	
209	2C	*	B10-3173-01	FRONT GLASS	
210	2C	*	B43-1269-04	BADGE	
-		*	B46-0100-50	WARRANTY CARD	
-		*	B64-1720-00	INSTRUCTION MANUAL	E
-		*	B64-1721-00	INSTRUCTION MANUAL	T,K
211	2C	*	D14-0739-04	ROLLER	
212	3D	*	D39-0241-05	DAMPER	
213	3C	*	D10-4496-02	SLIDER ASSY	
214	1D	*	D10-4484-03	LEVER	
AC1	2D	*	E30-4882-05	AUDIO CORD	RCA
DC1	1C	*	E30-4886-05	DC CORD	
FC1	2D	*	E39-0366-05	FLAT CABLE	
FC2	1D	*	E39-0367-05	FLAT CABLE	
C1	2D	*	F29-0049-05	INSULATING COVER	RCA
F1	2D	*	F52-0006-05	FUSE (MINI BLADE TYPE)	
215	3D	*	G02-1370-04	FLAT SPRING	
216	1D	*	G01-3014-04	EXTENSION SPRING	
217	3D	*	G01-3013-04	EXTENSION SPRING	
218	3D	*	G01-3012-04	EXTENSION SPRING	
219	3D	*	G01-3011-04	TORSION COIL SPRING	
220	1C	*	G01-3017-04	EXTENSION SPRING	
221	2D	*	G16-1163-04	SHEET	
222	3D	*	G16-1158-04	SHEET	
223	3C	*	G16-1153-04	SHEET	
-		*	H10-4677-14	POLYSTYRENE FOAMED FIXTURE	
-		*	H10-4728-02	POLYSTYRENE FOAMED FIXTURE	
-		*	H25-0337-04	PROTECTION BAG (180X300X0.03)	
-		*	H25-1127-04	PROTECTION BAG (0.5X350X450)	
-		*	H54-1762-03	ITEM CARTON CASE	
225	2D	*	J21-9548-03	MOUNTING HARDWARE ASSY	
230	1C	*	J19-4999-03	HOLDER	
232	1D	*	J19-5002-04	BRACKET ASSY	
233	3C	*	J31-1047-04	COLLAR	
234	1C	*	J90-0979-02	RAIL	
235	1C	*	J90-0982-02	RAIL	
236	1C	*	J21-9578-05	MOUNTING HARDWARE	
FPC1	3D	*	J84-0112-05	FLEXIBLE PRINTED WIRING BOARD	
240	1C	*	K24-3586-03	KNOB	EJ
241	1C	*	K24-3589-04	KNOB	OPEN
242	2C	*	K24-3610-04	KNOB	PLAY
243	2C	*	K24-3608-03	KNOB	SRC

Ref. No.	A d d	N e w	Parts No.	Description	Desti- nation
244	2C	*	K24-3609-04	KNOB COL	
245	2C	*	K24-3611-04	KNOB UP	
246	2C	*	K24-3612-04	KNOB DOWN	
247	2C	*	K25-1140-03	KNOB VOL	
248	2C	*	K25-1181-03	KNOB EQ	
249	2C	*	K25-1182-03	KNOB DISP	
250	2C	*	K25-1183-03	KNOB 1-3	
251	2C	*	K25-1184-03	KNOB 4-6	
252	2C	*	K25-1185-03	KNOB FM/AM	
260	1C	*	N99-1691-05	SCREW SET	
-		*	N19-2022-04	FLAT WASHER	
A	1D	*	N09-1492-05	MACHINE SCREW (2.6X3.5)	
B	1C	*	N09-4389-05	MACHINE SCREW (M2.6X3.5)	
B	2C	*	N09-4389-05	MACHINE SCREW (2.6X3.5)	
C	1D	*	N30-3004-46	PAN HEAD MACHINE SCREW	
D	1C	*	N30-3014-46	PAN HEAD MACHINE SCREW	
E	3C	*	N32-2606-45	FLAT HEAD MACHIN SCREW	
F	2D	*	N39-2025-46	PAN HEAD MACHIN SCREW	
G	1C	*	N80-2005-46	PAN HEAD TAPTITE SCREW	
H	2D	*	N83-3006-46	PAN HEAD TAPTITE SCREW	
J	2C	*	N80-2006-46	PAN HEAD TAPTITE SCREW	
J	1C	*	N80-2006-46	PAN HEAD TAPTITE SCREW	
K	2C	*	N80-2008-45	PAN HEAD TAPTITE SCREW	
M	3D	*	N09-4380-04	MACHINE SCREW	
N	3D	*	N09-4379-04	STEPPED SCREW	
P	3D	*	N39-2035-46	PAN HEAD MACHIN SCREW	
Q	2C	*	N19-2023-04	FLAT WASHER	
R	1C	*	N19-2059-04	FLAT WASHER	
DME	2D	*	X92-3900-01	MECHANISM ASSY CD	
MME	1D	*	X92-3770-00	MECHANISM ASSY MD	
SUB-CIRCUIT UNIT (X13-9810-00)					
D1			B30-1566-05	LED (1608,RED)	
D2			B30-1564-05	LED (1608,BLUE)	
D3,4			B30-1575-05	LED (1608,YG)	
C1			CK73GB1H103K	CHIP C 0.010UF	K
C2			C92-1359-05	CHIP-TAN 10UF	16WV
C3			CK73FB1E104K	CHIP C 0.10UF	K
C4			CC73GCH1H330J	CHIP C 33PF	J
CN1			E40-9651-05	FLAT CABLE CONNECTOR	
R1			RK73FB2A220J	CHIP R 22	J 1/10W
R2			RK73EB2B561J	CHIP R 560	J 1/8W
R3			RK73EB2B391J	CHIP R 390	J 1/8W
R4			RK73GB1J153J	CHIP R 15K	J 1/16W
R5			RK73GB1J104J	CHIP R 100K	J 1/16W
R6			RK73GB1J243J	CHIP R 24K	J 1/16W
R7			RK73GB1J104J	CHIP R 100K	J 1/16W
R8			RK73EB2B751J	CHIP R 750	J 1/8W
R9			RK73EB2B182J	CHIP R 1.8K	J 1/8W
R10			RK73GB1J102J	CHIP R 1.0K	J 1/16W
S1			S70-0841-05	TACT SWITCH	
S2			S70-0842-05	TACT SWITCH	
IC1			RS-171	ANALOGUE IC	

△ Indicates safety critical components.

PARTS LIST

* New parts

Parts without Parts No. are not supplied.

Les articles non mentionnés dans le Parts No. ne sont pas fournis.

Teile ohne Parts No. werden nicht geliefert.

SUB-CIRCUIT UNIT (X13-9810-00)

Ref. No.	A d d	N e w	Parts No.	Description	Desti- nation
Q1,2			2SC4081(S)	TRANSISTOR	
SYNTHESIZER UNIT (X14-6320-21)					
C1			C90-5304-05	ELECTRO 4700UF 16WV	
C2			CK73FB1H104K	CHIP C 0.10UF K	
C3-6			CK73GB1E223K	CHIP C 0.022UF K	
C7,8			CK73FB1H104K	CHIP C 0.10UF K	
C9			CC73GCH1H101J	CHIP C 100PF J	
C10,11			CK73GB1E473K	CHIP C 0.047UF K	
C12			C90-2759-05	ELECTRO 10UF 16WV	
C13			C90-5257-05	ALMINIUM ELECTROLYTIC C.	
C14			C90-2759-05	ELECTRO 10UF 16WV	
C15			CK73GB1E223K	CHIP C 0.022UF K	
C16			CK73FB1C224K	CHIP C 0.22UF K	
C17			C90-2528-05	ELECTRO 10UF 10WV	
C19			C90-2759-05	ELECTRO 10UF 16WV	
C20			CK73FB1C224K	CHIP C 0.22UF K	
C21,22			CK73FB1A105K	CHIP C 1.0UF K	
C23,24			CK73GB1C104K	CHIP C 0.10UF K	
C26			C90-2672-05	ELECTRO 100UF 10WV	
C27			CK73GB1H103K	CHIP C 0.010UF K	
C31			CK73GB1C104K	CHIP C 0.10UF K	
C32			C90-2550-05	ELECTRO 100UF 10WV	
C33			CK73GB1H103K	CHIP C 0.010UF K	
C34			C90-2557-05	ELECTRO 2.2UF 50WV	
C35			CK73GB1E473K	CHIP C 0.047UF K	
C38			C90-2681-05	ELECTRO 33UF 16WV	
C42			CK73GB1H103K	CHIP C 0.010UF K	
C43			CC73GCH1H330J	CHIP C 33PF J	
C81,82			CK73FB1H104K	CHIP C 0.10UF K	
C83,84			CK73EB1E105K	CHIP C 1.0UF K	
C86			CE04NW0J470M	ELECTRO 47UF 6.3WV	
C88			CK73FB1H104K	CHIP C 0.10UF K	
C100			CE04CW0J331M	ELECTRO 330UF 6.3WV	
C101			CK73GB1H103K	CHIP C 0.010UF K	
C102			CK73GB1C104K	CHIP C 0.10UF K	
C103,104			CC73GCH1H120J	CHIP C 12PF J	
C105			CK73GB1H103K	CHIP C 0.010UF K	
C107,108			CK73GB1H222K	CHIP C 2200PF K	
C109-111			CK73GB1H103K	CHIP C 0.010UF K	
C112			CK73GB1C104K	CHIP C 0.10UF K	
C113			CK73GB1H103K	CHIP C 0.010UF K	
C115			CK73GB1H472K	CHIP C 4700PF K	
C117			CK73GB1H472K	CHIP C 4700PF K	
C118			CK73GB1H103K	CHIP C 0.010UF K	
C119,120			CK73GB1E223K	CHIP C 0.022UF K	
C200			CE04NW1C100M	ELECTRO 10UF 16WV	
C203			CK73GB1H182K	CHIP C 1800PF K	
C205			CK73GB1H821K	CHIP C 820PF K	
C206			CK73GB1C104K	CHIP C 0.10UF K	
C207			CE04NW1H010M	ELECTRO 1.0UF 50WV	
C210			CK73GB1H821K	CHIP C 820PF K	
C211			CK73GB1H222K	CHIP C 2200PF K	
C212,213			CC73GCH1H121J	CHIP C 120PF J	
C214			CK73GB1H821K	CHIP C 820PF K	
C215			CK73GB1H222K	CHIP C 2200PF K	
C216,217			CC73GCH1H121J	CHIP C 120PF J	
C230-233			CE04NW1C100M	ELECTRO 10UF 16WV	
C234,235			CE04NW1HR47M	ELECTRO 0.47UF 50WV	
C240			CE04NW1C220M	ELECTRO 22UF 16WV	
C241			CK73FB1H122K	CHIP C 1200PF K	
C242			CE04NW1C220M	ELECTRO 22UF 16WV	
C243			CK73FB1H122K	CHIP C 1200PF K	
C244			CE04NW1HR47M	ELECTRO 0.47UF 50WV	
C245			CE04NW1C100M	ELECTRO 10UF 16WV	
C246			C90-2525-05	NP-ELECT 2.2UF 35WV	
C250,251			C92-1497-05	ELECTRO 0.33UF 50WV	
C252-255			CK73FB1H104K	CHIP C 0.10UF K	
C265			CE04NW1H4R7M	ELECTRO 4.7UF 50WV	
C300			CE04NW1C100M	ELECTRO 10UF 16WV	
C303			CK73GB1H182K	CHIP C 1800PF K	
C305			CK73GB1H821K	CHIP C 820PF K	
C306			CK73GB1C104K	CHIP C 0.10UF K	
C307			CE04NW1H010M	ELECTRO 1.0UF 50WV	
C310			CK73GB1H821K	CHIP C 820PF K	
C311			CK73GB1H222K	CHIP C 2200PF K	
C312,313			CC73GCH1H121J	CHIP C 120PF J	
C314			CK73GB1H821K	CHIP C 820PF K	
C315			CK73GB1H222K	CHIP C 2200PF K	
C316,317			CC73GCH1H121J	CHIP C 120PF J	
C330-333			CE04NW1C100M	ELECTRO 10UF 16WV	
C339			CK73FB1E104K	CHIP C 0.10UF K	
C340			CE04NW1C220M	ELECTRO 22UF 16WV	
C341			CK73FB1H122K	CHIP C 1200PF K	
C342			CE04NW1C220M	ELECTRO 22UF 16WV	
C343			CK73FB1H122K	CHIP C 1200PF K	
C344			CE04NW1HR47M	ELECTRO 0.47UF 50WV	
C345			CE04NW1C100M	ELECTRO 10UF 16WV	
C346			C90-2525-05	NP-ELECT 2.2UF 35WV	
C350,351			C92-1497-05	ELECTRO 0.33UF 50WV	
C352-355			CK73FB1H104K	CHIP C 0.10UF K	
C365			CE04NW1H4R7M	ELECTRO 4.7UF 50WV	
C400			CE04NW0J470M	ELECTRO 47UF 6.3WV	
C401-409			CK73GB1C104K	CHIP C 0.10UF K	
C410,411			CC73GCH1H060D	CHIP C 6.0PF D	
C412-416			CK73GB1C104K	CHIP C 0.10UF K	
C417			CE04NW1A101M	ELECTRO 100UF 10WV	
C418-420			CK73GB1C104K	CHIP C 0.10UF K	
C425			CE04NW1A330M	ELECTRO 33UF 10WV	
C426			CK73GB1E223K	CHIP C 0.022UF K	
C427			CE04NW1A330M	ELECTRO 33UF 10WV	
C428			CK73GB1E223K	CHIP C 0.022UF K	
C429			CE04NW1A330M	ELECTRO 33UF 10WV	
C430			CK73GB1E223K	CHIP C 0.022UF K	
C431-433			CE04NW1C100M	ELECTRO 10UF 16WV	
C434			CE04NW1C220M	ELECTRO 22UF 16WV	
C435			CK73GB1E223K	CHIP C 0.022UF K	
C436			CE04NW1A330M	ELECTRO 33UF 10WV	
C437			CK73GB1E223K	CHIP C 0.022UF K	
C438			CE04NW1A101M	ELECTRO 100UF 10WV	

△ Indicates safety critical components.

PARTS LIST

* New parts

Parts without Parts No. are not supplied.

Les articles non mentionnés dans le Parts No. ne sont pas fournis.

Teile ohne Parts No. werden nicht geliefert.

SYNTHESIZER UNIT (X14-6320-21)

Ref. No.	A d d	N e w	Parts No.	Description	Desti- nation	Ref. No.	A d d	N e w	Parts No.	Description	Desti- nation
C439			CK73GB1E223K	CHIP C 0.022UF K		CP10			R90-1013-05	MULTI-COMP 2.2K X2	
C440			CC73GCH1H101J	CHIP C 100PF J		CP11,12			R90-0722-05	MULTI-COMP 2.2K X4	
C441			CE04NW1A101M	ELECTRO 100UF 10WV		CP17			R90-0722-05	MULTI-COMP 2.2K X4	
C442			CK73GB1E223K	CHIP C 0.022UF K		CP19			R90-1016-05	MULTI-COMP 470 X4	
C443			CK73GB1C823K	CHIP C 0.082UF K		R1			RK73GB1J183J	CHIP R 18K J 1/16W	
C445			CK73FB1E104K	CHIP C 0.10UF K		R2			RK73GB1J223J	CHIP R 22K J 1/16W	
C446			CK73FB1C224K	CHIP C 0.22UF K		R3			RK73GB1J153J	CHIP R 15K J 1/16W	
C447			CC73GCH1H151J	CHIP C 150PF J		R4			RK73EB2B332J	CHIP R 3.3K J 1/8W	
C448			CK73GB1E333K	CHIP C 0.033UF K		R5			RK73GB1J223J	CHIP R 22K J 1/16W	
C449			CK73GB1E183K	CHIP C 0.018UF K		R6			RK73GB1J103J	CHIP R 10K J 1/16W	
C450			CE04NW1H4R7M	ELECTRO 4.7UF 50WV		R7,8			RK73EB2B103J	CHIP R 10K J 1/8W	
C452			CK73GB1E223K	CHIP C 0.022UF K		R9			RK73EB2B102J	CHIP R 1.0K J 1/8W	
C454			C90-2680-05	ELECTRO 22UF 16WV		R10			RK73FB2A472J	CHIP R 4.7K J 1/10W	
C455			CK73GB1E223K	CHIP C 0.022UF K		R12			R92-2023-05	CHIP R 820 J 1/2W	
C457			CK73EB1E105K	CHIP C 1.0UF K		R13			RK73EB2B472J	CHIP R 4.7K J 1/8W	
C460			CE04NW1H010M	ELECTRO 1.0UF 50WV		R14			RK73GB1J103J	CHIP R 10K J 1/16W	
C500			CK73GB1H103K	CHIP C 0.010UF K		R16			RK73FB2A561J	CHIP R 560 J 1/10W	
C501			CE04NW1A101M	ELECTRO 100UF 10WV		R17			RN73GH1J3571D	CHIP R 3.57K D 1/16W	
C502			CK73GB1C104K	CHIP C 0.10UF K		R18			RK73GB1J103J	CHIP R 10K J 1/16W	
C503			CE04NW1A101M	ELECTRO 100UF 10WV		R19			RN73GH1J5491D	CHIP R 5.49K D 1/16W	
C504,505			CK73EB1E105K	CHIP C 1.0UF K		R20			RK73GB1J103J	CHIP R 10K J 1/16W	
C506			CE04NW1C100M	ELECTRO 10UF 16WV		R21			RN73GH1J102D	CHIP R 1.0K D 1/16W	
C507,508			CK73GB1H103K	CHIP C 0.010UF K		R22			RN73GH1J222D	CHIP R 2.2K D 1/16W	
C509,510			CK73GB1C104K	CHIP C 0.10UF K		R23			RN73GH1J393D	CHIP R 39K D 1/16W	
C511,512			CK73GB1H103K	CHIP C 0.010UF K		R24			RN73GH1J1242D	CHIP R 12.4K D 1/16W	
C513,514			CE04NW1C100M	ELECTRO 10UF 16WV		R25			RK73EB2B821J	CHIP R 820 J 1/8W	
C515			CK73GB1C104K	CHIP C 0.10UF K		R26,27			R92-1211-05	CHIP R 5.6 J 1/2W	
CN1			E40-9339-05	FLAT CABLE CONNECTOR		R28,29			RK73EB2B621J	CHIP R 620 J 1/8W	
CN2			E40-9787-05	FLAT CABLE CONNECTOR		R30			RK73FB2A104J	CHIP R 100K J 1/10W	
CN3			E40-9340-05	FLAT CABLE CONNECTOR		R31			RK73EB2B821J	CHIP R 820 J 1/8W	
CN4			E40-3261-05	PIN ASSY		R32,33			R92-1211-05	CHIP R 5.6 J 1/2W	
△ J1			E58-0836-05	RECTANGULAR RECEPTACLE		R34,35			RK73EB2B621J	CHIP R 620 J 1/8W	
J2			E56-0834-05	CYLINDRICAL RECEPTACLE		R36			RK73FB2A104J	CHIP R 100K J 1/10W	
J3			E63-0852-05	PIN JACK		R37			RK73EB2B152J	CHIP R 1.5K J 1/8W	
WH1			E30-4653-05	CORD WITH PLUG		R38			RK73EB2B102J	CHIP R 1.0K J 1/8W	
L1			L33-1029-05	SMALL FIXED INDUCTOR		R41			R92-3056-05	CHIP R 3.3K D 1/10W	
L10			L40-1005-34	SMALL FIXED INDUCTOR		R42			RK73FB2A432J	CHIP R 4.3K J 1/10W	
L30			L40-4795-34	SMALL FIXED INDUCTOR		R43			RK73GB1J822J	CHIP R 8.2K J 1/16W	
L100,101			L40-4795-34	SMALL FIXED INDUCTOR		R44			RK73GB1J473J	CHIP R 47K J 1/16W	
L400			L92-0308-05	FERRITE CORE		R45			R92-3048-05	CHIP R 27K D 1/10W	
L403-409			L92-0332-05	CHIP FERRITE		R60			RK73EB2B101J	CHIP R 100 J 1/8W	
L410			L92-0308-05	FERRITE CORE		R61,62			RK73EB2B102J	CHIP R 1.0K J 1/8W	
L500			L33-1123-05	LINE FILTER COIL		R63			RK73EB2B4R7J	CHIP R 4.7 J 1/8W	
L501			L33-1001-05	SMALL FIXED INDUCTOR		R64			RK73EB2B102J	CHIP R 1.0K J 1/8W	
L502-506			L40-4795-34	SMALL FIXED INDUCTOR		R66-68			RK73EB2B101J	CHIP R 100 J 1/8W	
X1			L77-2745-05	CRYSTAL RESONATOR (33.8688MHZ)		R70			RK73EB2B101J	CHIP R 100 J 1/8W	
X2			L77-2744-05	CRYSTAL RESONATOR (12.5MHZ)		R71			RK73GB1J104J	CHIP R 100K J 1/16W	
L	2D		N80-3010-46	PAN HEAD TAPTITE SCREW		R102			RK73GB1J222J	CHIP R 2.2K J 1/16W	
CP1			R90-1016-05	MULTI-COMP 470 X4		R103			RK73GB1J101J	CHIP R 100 J 1/16W	
CP3,4			R90-0724-05	MULTI-COMP 1K X4		R104,105			RK73GB1J104J	CHIP R 100K J 1/16W	
CP5			R90-0722-05	MULTI-COMP 2.2K X4		R106			RK73GB1J102J	CHIP R 1.0K J 1/16W	
CP8			R90-1013-05	MULTI-COMP 2.2K X2		R107			RK73GB1J101J	CHIP R 100 J 1/16W	
CP9			R90-0724-05	MULTI-COMP 1K X4		R108			RK73GB1J103J	CHIP R 10K J 1/16W	
						R109			RK73GB1J472J	CHIP R 4.7K J 1/16W	
						R110,111			RK73GB1J102J	CHIP R 1.0K J 1/16W	

△ Indicates safety critical components.

PARTS LIST

* New parts

Parts without Parts No. are not supplied.

Les articles non mentionnés dans le Parts No. ne sont pas fournis.

Teile ohne Parts No. werden nicht geliefert.

SYNTHESIZER UNIT (X14-6320-21)

Ref. No.	A d d	N e w	Parts No.	Description	Desti- nation	Ref. No.	A d d	N e w	Parts No.	Description	Desti- nation
R112			RK73EB2B102J	CHIP R 1.0K J 1/8W		R242			RK73FB2A101J	CHIP R 100 J 1/10W	
R113			RK73GB1J101J	CHIP R 100 J 1/16W		R243			RK73FB2A471J	CHIP R 470 J 1/10W	
R114,115			RK73GB1J104J	CHIP R 100K J 1/16W		R244			RK73FB2A473J	CHIP R 47K J 1/10W	
R117			RK73GB1J222J	CHIP R 2.2K J 1/16W		R245			RK73FB2A101J	CHIP R 100 J 1/10W	
R118			RK73FB2A332J	CHIP R 3.3K J 1/10W		R254,255			RK73EB2B4R7J	CHIP R 4.7 J 1/8W	
R119			RK73GB1J223J	CHIP R 22K J 1/16W		R256-259			RK73GB1J273J	CHIP R 27K J 1/16W	
R120			RK73GB1J472J	CHIP R 4.7K J 1/16W		R260			RK73GB1J473J	CHIP R 47K J 1/16W	
R122-125			RK73EB2B101J	CHIP R 100 J 1/8W		R262			RK73GB1J473J	CHIP R 47K J 1/16W	
R128			RK73GB1J104J	CHIP R 100K J 1/16W		R300			RK73FB2A471J	CHIP R 470 J 1/10W	
R129			RK73GB1J102J	CHIP R 1.0K J 1/16W		R301			RK73GB1J472J	CHIP R 4.7K J 1/16W	
R130			RK73GB1J222J	CHIP R 2.2K J 1/16W		R302			RK73GB1J473J	CHIP R 47K J 1/16W	
R132			RK73GB1J471J	CHIP R 470 J 1/16W		R303			RK73FB2A103J	CHIP R 10K J 1/10W	
R134,135			RK73GB1J104J	CHIP R 100K J 1/16W		R304			RK73FB2A182J	CHIP R 1.8K J 1/10W	
R136			RK73GB1J222J	CHIP R 2.2K J 1/16W		R305			RK73FB2A242J	CHIP R 2.4K J 1/10W	
R137			RK73GB1J104J	CHIP R 100K J 1/16W		R306			RK73GB1J273J	CHIP R 27K J 1/16W	
R139			RK73FB2A473J	CHIP R 47K J 1/10W		R307			RK73GB1J155J	CHIP R 1.5M J 1/16W	
R140			RK73FB2A681J	CHIP R 680 J 1/10W		R310,311			RK73GB1J123J	CHIP R 12K J 1/16W	
R141			RK73GB1J104J	CHIP R 100K J 1/16W		R312,313			RK73GB1J822J	CHIP R 8.2K J 1/16W	
R142			RK73GB1J473J	CHIP R 47K J 1/16W		R314,315			RK73GB1J333J	CHIP R 33K J 1/16W	
R143			RK73FB2A104J	CHIP R 100K J 1/10W		R316,317			RK73GB1J222J	CHIP R 2.2K J 1/16W	
R144			RK73GB1J104J	CHIP R 100K J 1/16W		R320,321			RK73GB1J123J	CHIP R 12K J 1/16W	
R145			RK73GB1J471J	CHIP R 470 J 1/16W		R322,323			RK73GB1J822J	CHIP R 8.2K J 1/16W	
R146			RK73GB1J104J	CHIP R 100K J 1/16W		R324,325			RK73GB1J333J	CHIP R 33K J 1/16W	
R147			RK73GB1J471J	CHIP R 470 J 1/16W		R326,327			RK73GB1J222J	CHIP R 2.2K J 1/16W	
R148,149			RK73GB1J104J	CHIP R 100K J 1/16W		R340			RK73FB2A471J	CHIP R 470 J 1/10W	
R150,151			RK73GB1J102J	CHIP R 1.0K J 1/16W		R341			RK73FB2A473J	CHIP R 47K J 1/10W	
R152			RK73GB1J222J	CHIP R 2.2K J 1/16W		R342			RK73FB2A101J	CHIP R 100 J 1/10W	
R153			RK73GB1J471J	CHIP R 470 J 1/16W		R343			RK73FB2A471J	CHIP R 470 J 1/10W	
R154			RK73GB1J472J	CHIP R 4.7K J 1/16W		R344			RK73FB2A473J	CHIP R 47K J 1/10W	
R155,156			RK73GB1J102J	CHIP R 1.0K J 1/16W		R345			RK73FB2A101J	CHIP R 100 J 1/10W	
R157,158			RK73GB1J104J	CHIP R 100K J 1/16W		R356-359			RK73GB1J273J	CHIP R 27K J 1/16W	
R160			RK73GB1J472J	CHIP R 4.7K J 1/16W		R360			RK73GB1J473J	CHIP R 47K J 1/16W	
R161			RK73GB1J104J	CHIP R 100K J 1/16W		R362			RK73GB1J473J	CHIP R 47K J 1/16W	
R162			RK73GB1J472J	CHIP R 4.7K J 1/16W		R401			RK73GB1J391J	CHIP R 390 J 1/16W	
R163-166			RK73GB1J101J	CHIP R 100 J 1/16W		R402			RK73GB1J113J	CHIP R 11K J 1/16W	
R167			RK73GB1J473J	CHIP R 47K J 1/16W		R403			RK73GB1J273J	CHIP R 27K J 1/16W	
R169			RK73GB1J473J	CHIP R 47K J 1/16W		R404,405			RK73GB1J472J	CHIP R 4.7K J 1/16W	
R200			RK73FB2A471J	CHIP R 470 J 1/10W		R406			RK73GB1J272J	CHIP R 2.7K J 1/16W	
R201			RK73GB1J472J	CHIP R 4.7K J 1/16W		R407			RK73GB1J102J	CHIP R 1.0K J 1/16W	
R202			RK73GB1J473J	CHIP R 47K J 1/16W		R408,409			RK73GB1J101J	CHIP R 100 J 1/16W	
R203			RK73FB2A103J	CHIP R 10K J 1/10W		R410,411			RK73GB1J104J	CHIP R 100K J 1/16W	
R204			RK73FB2A182J	CHIP R 1.8K J 1/10W		R412			RK73GB1J102J	CHIP R 1.0K J 1/16W	
R205			RK73FB2A242J	CHIP R 2.4K J 1/10W		R413			RK73GB1J472J	CHIP R 4.7K J 1/16W	
R206			RK73GB1J273J	CHIP R 27K J 1/16W		R414			RK73GB1J102J	CHIP R 1.0K J 1/16W	
R207			RK73GB1J225J	CHIP R 2.2M J 1/16W		R415			RK73GB1J303J	CHIP R 30K J 1/16W	
R210,211			RK73GB1J123J	CHIP R 12K J 1/16W		R416			RK73GB1J102J	CHIP R 1.0K J 1/16W	
R212,213			RK73GB1J822J	CHIP R 8.2K J 1/16W		R417			RK73GB1J473J	CHIP R 47K J 1/16W	
R214,215			RK73GB1J333J	CHIP R 33K J 1/16W		R418			RK73EB2B102J	CHIP R 1.0K J 1/8W	
R216,217			RK73GB1J222J	CHIP R 2.2K J 1/16W		R430			RK73EB2B101J	CHIP R 100 J 1/8W	
R220,221			RK73GB1J123J	CHIP R 12K J 1/16W		R431			RK73GB1J103J	CHIP R 10K J 1/16W	
R222,223			RK73GB1J822J	CHIP R 8.2K J 1/16W		R432			RK73EB2B101J	CHIP R 100 J 1/8W	
R224,225			RK73GB1J333J	CHIP R 33K J 1/16W		R433,434			RK73GB1J104J	CHIP R 100K J 1/16W	
R226,227			RK73GB1J222J	CHIP R 2.2K J 1/16W		R450-453			RK73GB1J472J	CHIP R 4.7K J 1/16W	
R240			RK73FB2A471J	CHIP R 470 J 1/10W		R481			RK73GB1J471J	CHIP R 470 J 1/16W	
R241			RK73FB2A473J	CHIP R 47K J 1/10W		R482			RK73FB2A471J	CHIP R 470 J 1/10W	

△ Indicates safety critical components.

PARTS LIST

*New parts

Parts without Parts No. are not supplied.

Les articles non mentionnés dans le Parts No. ne sont pas fournis.

Teile ohne Parts No. werden nicht geliefert.

SYNTHESIZER UNIT (X14-6320-21)

Ref. No.	A d d	N e w	Parts No.	Description	Desti- nation
R483			RK73GB1J102J	CHIP R 1.0K J 1/16W	
R484			RK73GB1J101J	CHIP R 100 J 1/16W	
R500,501			RK73FB2A222J	CHIP R 2.2K J 1/10W	
R502,503			RK73GB1J223J	CHIP R 22K J 1/16W	
R504			RK73GB1J471J	CHIP R 470 J 1/16W	
W1			R92-2053-05	CHIP R 0 J 1/8W	
D1			RM10ZLF	DIODE	
D2			HZS7A3L	ZENER DIODE	
D3			02CZ12-X	ZENER DIODE	
D4			02CZ6.8-Y	ZENER DIODE	
D5			DAN202K	DIODE	
D6			02CZ6.2-X	ZENER DIODE	
D7-9			1SR154-400	DIODE	
D10			DAN217	DIODE	
D11			DA227	DIODE	
D12,13			DA221	DIODE	
D14			02CZ5.6-Y	ZENER DIODE	
D15			02CZ7.5-X	ZENER DIODE	
D16			HZM11N(B1)	ZENER DIODE	
D19			1SR154-400	DIODE	
D28,29			HZM6.8WA	ZENER DIODE	
D30			DAN202K	DIODE	
D31-33			DA204K	DIODE	
D34			FTZ6.8E	ZENER DIODE	
D37,38			DAP202K	DIODE	
D100			DAN202K	DIODE	
D101			DAP202K	DIODE	
D400			02CZ3.6-Z	ZENER DIODE	
D401			02CZ6.2-X	ZENER DIODE	
D402			DAP202K	DIODE	
D403			DAN202K	DIODE	
D404			DAP202K	DIODE	
D405			1SR154-400	DIODE	
D406			U1GWJ44	DIODE	
D407-411			1SR154-400	DIODE	
D412			U1GWJ44	DIODE	
D413,414			1SR154-400	DIODE	
D501			HZM5.6N(B2)	ZENER DIODE	
IC1		*	M30622MCAA58FP	MI-COM IC	
IC2			TDA7400	ANALOGUE IC	
IC3			L4943	ANALOGUE IC	
IC5			BA3129F	IC (SWITCH)	
IC7			NJM4565MD	IC (OP AMP X2)	
IC8			CXD2728Q-1	ANALOGUE IC	
IC9,10			NJM4565MD	IC (OP AMP X2)	
IC11			BA3129F	IC (SWITCH)	
IC12			TA8263AH	ANALOGUE IC	
IC13			NJM4565MD	IC (OP AMP X2)	
IC14			PST9142NR	ANALOGUE IC	
IC16			TC7W02FU	MOS-IC	
Q1			DTC144EK	DIGITAL TRANSISTOR	
Q2			FMW1	TRANSISTOR	
Q4,5			DTC144EK	DIGITAL TRANSISTOR	
Q6			DTA123JK	DIGITAL TRANSISTOR	

Ref. No.	A d d	N e w	Parts No.	Description	Desti- nation
Q9			2SB1188(R)	TRANSISTOR	
Q10			2SC2412K(S)	TRANSISTOR	
Q11			2SC2412K	TRANSISTOR	
Q12			IMD16A	TRANSISTOR	
Q15			FMC2A	DIGITAL TRANSISTOR	
Q16,17			2SB1565	TRANSISTOR	
Q18			2SC2412K	TRANSISTOR	
Q20			FMC2A	DIGITAL TRANSISTOR	
Q21,22			2SA1906	TRANSISTOR	
Q23			2SC2412K	TRANSISTOR	
Q24			2SB1565F	TRANSISTOR	
Q25			FMC2A	DIGITAL TRANSISTOR	
Q27			2SC2412K	TRANSISTOR	
Q37			FMC2A	DIGITAL TRANSISTOR	
Q43			2SD1766	TRANSISTOR	
Q100			DTA124EK	DIGITAL TRANSISTOR	
Q101			DTC114YK	DIGITAL TRANSISTOR	
Q102			DTA114EK	DIGITAL TRANSISTOR	
Q103			DTC144EK	DIGITAL TRANSISTOR	
Q107			DTC114YK	DIGITAL TRANSISTOR	
Q108			DTC144EK	DIGITAL TRANSISTOR	
Q110,111			DTC144EK	DIGITAL TRANSISTOR	
Q200			2SD2114K	TRANSISTOR	
Q201,202			DTC143TK	DIGITAL TRANSISTOR	
Q300			2SD2114K	TRANSISTOR	
Q301,302			DTC143TK	DIGITAL TRANSISTOR	
Q500			FMG1A	DIGITAL TRANSISTOR	
Q501			2SC2412K	TRANSISTOR	
Q502,503			CPH3105	TRANSISTOR	
TH1			PTH9C32BB471Q	POSITIVE RESISTOR	
A2			W02-3209-05	FM/AM FRONT-END	
SWITCH UNIT (X25-8610-00)					
D5-7			B30-1582-05	LED	
D11			B30-1564-05	LED (1608,BLUE)	
ED1			B38-1040-05	LIQUID CRYSTAL	
C1			C92-1430-05	CHIP C 22UF 16WV	
C2			CK73GB1E223K	CHIP C 0.022UF K	
C3			C92-1359-05	CHIP-TAN 10UF 16WV	
C4			CK73GB1H103K	CHIP C 0.010UF K	
C5			CK73GB1H681K	CHIP C 680PF K	
C6			CK73GB1C104K	CHIP C 0.10UF K	
C7,8			CK73GB1E223K	CHIP C 0.022UF K	
C12-14			CK73GB1C104K	CHIP C 0.10UF K	
C15-25			CK73GB1H103K	CHIP C 0.010UF K	
C26			CK73GB1C104K	CHIP C 0.10UF K	
C27			CK73GB1H103K	CHIP C 0.010UF K	
C28			CC73GCH1H330J	CHIP C 33PF J	
-			E29-1806-04	CONDUCTIVE RUBBER	
CN1			E40-5499-05	FLAT CABLE CONNECTOR	
L1			L40-4795-34	SMALL FIXED INDUCTOR	
X1			L78-0587-05	RESONATOR (10MHZ)	
CP1			R90-1016-05	MULTI-COMP 470 X4	

△ Indicates safety critical components.

PARTS LIST

* New parts

Parts without Parts No. are not supplied.

Les articles non mentionnes dans le Parts No. ne sont pas fournis.

Teile ohne Parts No. werden nicht geliefert.

SWITCH UNIT (X25-8610-00)

Ref. No.	A d d	N e w	Parts No.	Description	Desti- nation	Ref. No.	A d d	N e w	Parts No.	Description	Desti- nation
CP2			R90-1014-05	MULTI-COMP 100 X4		C10			CK73GB1H472K	CHIP C 4700PF	K
CP3-5			R90-0724-05	MULTI-COMP 1K X4		C11			CK73GB1H682K	CHIP C 6800PF	K
CP6			R90-0748-05	MULTI-COMP 47K X4		C12			CK73GB1H222K	CHIP C 2200PF	K
CP7			R90-0725-05	MULTI-COMP 1K X2		C13			CK73GB1C273K	CHIP C 0.027UF	K
CP8			R90-0723-05	MULTI-COMP 47K X2		C14			CK73GB1H472K	CHIP C 4700PF	K
CP9,10			R90-0724-05	MULTI-COMP 1K X4		C15			CK73GB1C473K	CHIP C 0.047UF	K
R1-3			RK73GB1J102J	CHIP R 1.0K J 1/16W		C16			CC73GCH1H820J	CHIP C 82PF	J
R4			RK73GB1J473J	CHIP R 47K J 1/16W		C17			CK73GB1H472K	CHIP C 4700PF	K
R5			RK73GB1J102J	CHIP R 1.0K J 1/16W		C18			CC73GCH1H331J	CHIP C 330PF	J
R6,7			RK73GB1J103J	CHIP R 10K J 1/16W		C18			CK73GB1H331K	CHIP C 330PF	K
R8-11			RK73EB2B391J	CHIP R 390 J 1/8W		C19,20			CK73GB1C104K	CHIP C 0.10UF	K
R12			RK73EB2B561J	CHIP R 560 J 1/8W		C21			C92-1359-05	CHIP-TAN 10UF	16WV
R13			RK73EB2B391J	CHIP R 390 J 1/8W		C22			CK73GB1C104K	CHIP C 0.10UF	K
R14-17			RK73EB2B561J	CHIP R 560 J 1/8W		C23			CK73GB1H102K	CHIP C 1000PF	K
R18-23			RK73EB2B511J	CHIP R 510 J 1/8W		C24			CK73GB1E223K	CHIP C 0.022UF	K
R24			RK73GB1J102J	CHIP R 1.0K J 1/16W		C25			CK73GB1H123K	CHIP C 0.012UF	K
R25			RK73GB1J473J	CHIP R 47K J 1/16W		C26			CK73FB1A105K	CHIP C 1.0UF	K
R26			RK73GB1J102J	CHIP R 1.0K J 1/16W		C28			CK73FB1A105K	CHIP C 1.0UF	K
R27			RK73GB1J473J	CHIP R 47K J 1/16W		C29			CK73GB1C104K	CHIP C 0.10UF	K
R28			RK73GB1J102J	CHIP R 1.0K J 1/16W		C31,32			CK73GB1H103K	CHIP C 0.010UF	K
R29			RK73GB1J473J	CHIP R 47K J 1/16W		C33			CK73GB1C104K	CHIP C 0.10UF	K
R30			RK73GB1J223J	CHIP R 22K J 1/16W		C34			CK73EB1A335K	CHIP C 3.3UF	K
R31			RK73GB1J102J	CHIP R 1.0K J 1/16W		C35			CK73GB1C104K	CHIP C 0.10UF	K
R32			RK73GB1J433J	CHIP R 43K J 1/16W		C41			CK73EB1C225K	CHIP C 2.2UF	K
R33			RK73GB1J103J	CHIP R 10K J 1/16W		C43			CK73GB1H123K	CHIP C 0.012UF	K
R34,35			RK73GB1J473J	CHIP R 47K J 1/16W		C44			CK73GB1C104K	CHIP C 0.10UF	K
R36,37			RK73GB1J103J	CHIP R 10K J 1/16W		C45			CK73GB1H123K	CHIP C 0.012UF	K
R38			RK73GB1J513J	CHIP R 51K J 1/16W		C46			CK73GB1C473K	CHIP C 0.047UF	K
R39			RK73EB2B511J	CHIP R 510 J 1/8W		C51			CK73EB1A335K	CHIP C 3.3UF	K
R40			RK73GB1J473J	CHIP R 47K J 1/16W		C55			CK73GB1C104K	CHIP C 0.10UF	K
R41,42			RK73GB1J104J	CHIP R 100K J 1/16W		C63			C92-1359-05	CHIP-TAN 10UF	16WV
S1-6			S70-0841-05	TACT SWITCH		C67,68			CK73FB1A105K	CHIP C 1.0UF	K
S7-16			S70-0873-05	TACT SWITCH		C71,72			CK73GB1H471K	CHIP C 470PF	K
S17,18			S70-0877-05	TACT SWITCH		C77,78			CC73GCH1H680J	CHIP C 68PF	J
S19			S70-0841-05	TACT SWITCH		C79,80			C93-1044-05	CERAMIC 2200PF	K
S20			S70-0869-05	TACT SWITCH		C85			CK73GB1C104K	CHIP C 0.10UF	K
D1			DA114	DIODE		C88			CK73GB1C104K	CHIP C 0.10UF	K
D2,3			DA227	DIODE		CN1			E40-9536-05	FLAT CABLE CONNECTOR	
D4			02CZ8.2-Z	ZENER DIODE		CN2			E40-9339-05	FLAT CABLE CONNECTOR	
D8-10			DA114	DIODE		L1			L40-1001-78	SMALL FIXED INDUCTOR (10UH)	
D12,13			HZM6.8WA	ZENER DIODE		L2			L92-0308-05	FERRITE CORE	
IC1			M30220MA-101GP	MI-COM IC		X1			L78-0572-05	RESONATOR (16.93MHZ)	
IC2			LC75878W	MOS-IC		CP1-3			R90-1019-05	MULTI-COMP 100 X2	
Q1			DTC114YUA	DIGITAL TRANSISTOR		R1,2			RK73FB2A333J	CHIP R 33K J 1/10W	
Q2-6			2SC4081	TRANSISTOR		R3			RK73FB2A683J	CHIP R 68K J 1/10W	
CD PLAYER UNIT (X32-4820-01)						R5			RK73FB2A910J	CHIP R 91 J 1/10W	
C1,2			CK73FB1A105K	CHIP C 1.0UF	K	R6			RK73FB2A683J	CHIP R 68K J 1/10W	
C3			C92-1359-05	CHIP-TAN 10UF	16WV	R8			RK73EB2B4R7J	CHIP R 4.7 J 1/8W	
C4			C92-0566-05	CHIP-TAN 10UF	6.3WV	R9			RK73EB2B100J	CHIP R 10 J 1/8W	
C5			CC73GCH1H150J	CHIP C 15PF	J	R10,11			RK73FB2A822J	CHIP R 8.2K J 1/10W	
C6			CC73GCH1H020C	CHIP C 2.0PF	C	R12			RK73FB2A472J	CHIP R 4.7K J 1/10W	
C7			CK73GB1C104K	CHIP C 0.10UF	K	R13			RK73FB2A683J	CHIP R 68K J 1/10W	
C8			CK73FB1A105K	CHIP C 1.0UF	K	R14,15			RK73FB2A824J	CHIP R 820K J 1/10W	
C9			CC73GCH1H101J	CHIP C 100PF	J						

△ Indicates safety critical components.

PARTS LIST

* New parts

Parts without Parts No. are not supplied.

Les articles non mentionnes dans le Parts No. ne sont pas fournis.

Teile ohne Parts No. werden nicht geliefert.

CD PLAYER UNIT (X32-4820-01)

Ref. No.	A d d	N e w	Parts No.	Description	Desti- nation
R16			RK73FB2A223J	CHIP R 22K J 1/10W	
R17			RK73FB2A133J	CHIP R 13K J 1/10W	
R18			RK73FB2A392J	CHIP R 3.9K J 1/10W	
R19			RK73FB2A432J	CHIP R 4.3K J 1/10W	
R20			RK73FB2A104J	CHIP R 100K J 1/10W	
R21			RK73FB2A224J	CHIP R 220K J 1/10W	
R22,23			RK73FB2A333J	CHIP R 33K J 1/10W	
R32			RK73FB2A104J	CHIP R 100K J 1/10W	
R34			RK73FB2A683J	CHIP R 68K J 1/10W	
R35			RK73FB2A104J	CHIP R 100K J 1/10W	
R36			RK73FB2A151J	CHIP R 150 J 1/10W	
R37			RK73FB2A471J	CHIP R 470 J 1/10W	
R38			RK73FB2A224J	CHIP R 220K J 1/10W	
R44			RK73FB2A512J	CHIP R 5.1K J 1/10W	
R45			RK73FB2A103J	CHIP R 10K J 1/10W	
R46			RK73FB2A102J	CHIP R 1.0K J 1/10W	
R47			RK73FB2A103J	CHIP R 10K J 1/10W	
R49			RK73FB2A472J	CHIP R 4.7K J 1/10W	
R50			RK73FB2A102J	CHIP R 1.0K J 1/10W	
R52			RK73FB2A104J	CHIP R 100K J 1/10W	
R54			RK73FB2A104J	CHIP R 100K J 1/10W	
R71			RK73FB2A103J	CHIP R 10K J 1/10W	
R72			RK73FB2A102J	CHIP R 1.0K J 1/10W	
R73			RK73FB2A473J	CHIP R 47K J 1/10W	
R74			RK73FB2A103J	CHIP R 10K J 1/10W	
R75			RK73FB2A333J	CHIP R 33K J 1/10W	
R76			RK73FB2A622J	CHIP R 6.2K J 1/10W	
R77			RK73FB2A563J	CHIP R 56K J 1/10W	
R78			RK73FB2A243J	CHIP R 24K J 1/10W	
R79			RK73FB2A912J	CHIP R 9.1K J 1/10W	
R80			RK73FB2A202J	CHIP R 2.0K J 1/10W	
R81			RK73FB2A333J	CHIP R 33K J 1/10W	
R82			RK73FB2A103J	CHIP R 10K J 1/10W	
R83			RK73FB2A102J	CHIP R 1.0K J 1/10W	
R101,102			RK73FB2A332J	CHIP R 3.3K J 1/10W	
R103,104			RK73FB2A562J	CHIP R 5.6K J 1/10W	
R107,108			RK73FB2A331J	CHIP R 330 J 1/10W	
R117,118			RK73FB2A203J	CHIP R 20K J 1/10W	
R121,122			RK73FB2A203J	CHIP R 20K J 1/10W	
R125,126			RK73FB2A203J	CHIP R 20K J 1/10W	
R202			RK73FB2A102J	CHIP R 1.0K J 1/10W	
R214			RK73FB2A104J	CHIP R 100K J 1/10W	
R218			RK73FB2A473J	CHIP R 47K J 1/10W	
R221-224			RK73FB2A912J	CHIP R 9.1K J 1/10W	
R225,226			RK73FB2A433J	CHIP R 43K J 1/10W	
R227			RK73FB2A102J	CHIP R 1.0K J 1/10W	
R228			RK73FB2A512J	CHIP R 5.1K J 1/10W	
R229			RK73FB2A102J	CHIP R 1.0K J 1/10W	
R230			RK73FB2A512J	CHIP R 5.1K J 1/10W	
R231			RK73FB2A432J	CHIP R 4.3K J 1/10W	
R232			RK73FB2A133J	CHIP R 13K J 1/10W	
W7-9			R92-2052-05	CHIP R 0 J 1/10W	
W10			R92-2053-05	CHIP R 0 J 1/8W	
W15,16			R92-2052-05	CHIP R 0 J 1/10W	

Ref. No.	A d d	N e w	Parts No.	Description	Desti- nation
S1,2			S68-0838-05	PUSH SWITCH	
S3			S68-0823-05	PUSH SWITCH	
D1,2			DAN202U	DIODE	
D3			DA204K	DIODE	
D4			DAN202U	DIODE	
IC1			AN8806SB	ANALOGUE IC	
IC2			MN662774KE0	MOS-IC	
IC4			BA5917AFP	ANALOGUE IC	
IC5			TA78L05F	IC (VOLTAGE REGULATOR/ +5V)	
IC6			NJM4565MD	IC (OP AMP X2)	
IC10			BU4551BFV	ANALOGUE IC	
Q1			2SB1188	TRANSISTOR	
Q2			DTC124EUA	DIGITAL TRANSISTOR	
Q3,4			2SA1362(Y)	TRANSISTOR	
Q5			DTC124EUA	DIGITAL TRANSISTOR	
Q9-12			DTC114YUA	DIGITAL TRANSISTOR	

CD MECHANISM ASSY (X92-3900-01)					
Ref. No.	A d d	N e w	Parts No.	Description	Desti- nation
401	2A		A10-4482-01	CHASSIS	
402	2A		A10-4225-33	CHASSIS CALKING ASSY	
403	2B		A11-0915-43	SUB CHASSIS CALKING ASSY	
405A	2A		D10-4038-23	ARM ASSY	
408	3A		D10-3087-44	ARM ASSY	
409	3B		D10-3092-03	SLIDER	
410	3B		D10-3093-04	SLIDER ASSY	
411	2B		D10-3095-04	SLIDER ASSY	
412	2B		D10-3096-04	SLIDER ASSY	
413	1A		D10-3099-24	SLIDER ASSY	
414	1A		D10-3100-04	SLIDER ASSY	
415	2A		D10-4123-24	LEVER ASSY	
416	1B		D10-4004-04	LEVER ASSY	
417	1B		D10-4006-04	LEVER	
418	1A		D10-4007-04	LEVER	
419	2B		D10-4008-14	LEVER	
420	2A		D10-4009-23	ARM	
421	3A		D10-4010-04	LEVER	
422	3A		D10-4011-34	LEVER ASSY	
423	3A		D10-4013-14	ARM ASSY	
424	3B		D10-4050-04	ARM	
427	3B		D13-1340-13	RACK (GEAR)	
429	3B		D13-1231-04	GEAR	
430	3A		D13-1232-04	GEAR	
431	3B		D13-1233-04	GEAR	
432	3B		D13-1234-14	GEAR ASSY	
433	3A		D13-1238-03	GEAR	
434	3B		D13-1240-04	GEAR	
435	3B		D13-1241-04	GEAR	
436	3B		D13-1242-04	GEAR	
437	1B		D13-1243-04	GEAR	
438	1B		D13-1244-04	GEAR	
439	1B		D13-1245-14	GEAR	
440	2A		D13-1246-04	GEAR	
441	2B		D13-1247-04	GEAR	
443	2B		D13-1249-04	GEAR ASSY	
445	1B		D14-0668-04	ROLLER	

DPX-7010MD

PARTS LIST / SPECIFICATIONS

* New parts

Parts without Parts No. are not supplied.

Les articles non mentionnés dans le Parts No. ne sont pas fournis.

Teile ohne Parts No. werden nicht geliefert.

Ref. No.	A d d	N e w	Parts No.	Description	Desti- nation
446	2A		D14-0670-04	ROLLER	
447	3B		D14-0674-04	ROLLER	
448	2B		D13-1341-04	GEAR ASSY	
449	3A		D21-2228-14	SHAFT	
450	1A		D21-2229-04	SHAFT	
451	1A		D23-0925-24	RETAINER	
452	2A		D32-0614-04	STOPPER	
453	1B		D39-0223-05	DAMPER	
454	2B		D39-0224-05	DAMPER	
455	3B		F09-1246-04	SHEET	
458	3B		F09-1266-14	SHEET	
460	2A		G01-2770-04	EXTENSION SPRING	
461	3A		G01-2771-04	EXTENSION SPRING	
462	3A		G01-2772-24	EXTENSION SPRING	
463	3A		G01-2773-14	EXTENSION SPRING	
464	3A		G01-2774-34	EXTENSION SPRING	
465	1B		G01-2775-04	TORSION COIL SPRING	
466	1B		G01-2776-14	TORSION COIL SPRING	
467	3B		G01-2777-24	TORSION COIL SPRING	
469	2A		G01-2844-04	EXTENSION SPRING	
470	2A		G02-1231-04	FLAT SPRING	
471	2B		G02-1232-24	FLAT SPRING	
472	2A		G02-1241-24	FLAT SPRING	
475	2A		J11-0613-13	CLAMPER	
476	3A		J19-4678-13	HOLDER	
477	2B		J19-4679-24	HOLDER	
478	3B		J21-7684-13	MOUNTING HARDWARE	
479	2B		J21-7686-13	MOUNTING HARDWARE	
480	1B		J21-7690-03	MOUNTING HARDWARE	
481	3A		J31-1032-04	COLLAR	
482	3A		J84-0107-05	FLEXIBLE PRINTED WIRING BOARD	
483	1A		J90-0757-22	GUIDE	
A	2A		N09-4249-05	MACHINE SCREW (M1.7X2.5,LOCK)	
B	1D		N09-4172-05	TAPPING SCREW (2X3.5)	
C	2B		N09-4202-05	STEPPED SCREW	
D	2A		N38-2020-46	PAN HEAD MACHIN SCREW	
F	3B		N19-2023-04	FLAT WASHER	
G	2A		N19-2058-04	FLAT WASHER	
H	3A		N19-2093-04	FLAT WASHER	
M1	3B		T42-0764-04	DC MOTOR ASSY	
M2	3B		T42-0763-04	DC MOTOR ASSY	
PU1	2B		T25-0215-05	OPTICAL PICKUP HEAD	

Item		Specifications
FM	Frequency Range (Frequency Step)	87.5MHz~108.0MHz (50kHz) 87.9MHz~107.9MHz (200kHz)
	Channel Space Selection	50kHz/200kHz
	Usable Sensitivity S/N : 30dB	9.3dBf (0.8 μ v/75 Ω)
	Quieting Sensitivity S/N : 50dB	15.2dBf (1.6 μ v/75 Ω)
	Frequency Response (\pm 3.0dB)	30Hz~15kHz
	S/N (dB)	70dB (MONO)
	Selectivity	\geq 80dB (\pm 400kHz)
	Stereo Separation	40dB (1kHz)
	AM	Frequency Range (Frequency Step)
Channel Space Selection		9kHz/10kHz
Usable Sensitivity S/N : 20dB		28dB μ (25 μ v)
CD	Laser Diode	GaAlAs (λ = 780nm)
	Digital Filter (D/A)	8 Times Over Sampling
	D/A Converter	1 Bit
	Spindle Speed	500~200rpm (CLV)
	Wow & Flutter	Below Measurable Limit
	Frequency Response	10Hz~20kHz (\pm 1dB)
	Total Harmonic Distortion	0.01% (1kHz)
	S/N Ratio	93dB (1kHz)
	Dynamic Range	93dB
	Channel Separation	85dB
MD	Laser Diode	GaAlAs (λ = 780nm)
	Digital Filter (D/A)	8 Times Over Sampling
	D/A Converter	1 Bit
	Spindle Speed	400~900rpm (CLV)
	Wow & Flutter	Below Measurable Limit
	Frequency Response	20Hz~20kHz (\pm 1dB)
	Total Harmonic Distortion	0.01% (1kHz)
	S/N Ratio	90dB (1kHz)
	Dynamic Range	90dB
	Channel Separation	85dB
AMP	Maximum Power	47w x 4
	Full Bandwidth Power	22w x 4 (at less than 1% THD)
Preout Level		1500mv/10k Ω
Preout Impedance		\leq 600 Ω
DSP/EQ	A/D Converter	3-Dimensional 18 Bit $\Delta\Sigma$ System 128 Times Over Sampling
	D/A Converter	3-Dimensional 18 Bit $\Delta\Sigma$ System 128 Times Over Sampling
	EQ Frequency	60/160/400/1k/2k/6k/16kHz
	Adjustable Range	\pm 12dB (\pm 6 Step)
GENERAL	Operating Voltage	14.4v (11v~16v)
	Current Consumption	10A
	Installation Size (W)	178 (mm) 7 (inch)
	(H)	100 (mm) 3-15/16 (inch)
	(D)	155 (mm) 6-1/8 (inch)
Weight	2.9kg	

KENWOOD CORPORATION

14-6, Dogenzaka 1-chome, Shibuya-ku, Tokyo 150-8501 Japan

KENWOOD follows a policy of continuous advancements in development.

For this reason specifications may be changed without notice.